

Flatware
COLLECTION



ONEIDA®
Designing the dining experience.™

Table of Contents



Silverplate & 18/10 Stainless Steel

Bellini 6 (T029/V029)	Mascagni 18 (T023/V023)	Satin Reflections 30 (T528)
Colosseum 8 (T061)	Puccini 20 (T030/V030)	Scarlatti 32 (T018/V018)
Corelli 10 (T168/V168)	Quantum 22 (T673/V673)	Vasari 34 (T009)
Donizetti 12 (T022/V022)	Reflections 24 (T672/V672)	Verdi 36 (T031/V031)
Elevation 14 (T283/V283)	Rossini 26 (T314/V314)	Viotti 38 (T024/V024)
Fulcrum 16 (T657/V657)	Satin Fulcrum 28 (T812)	



Silverplate

Astragal 42 (1119)
Becket 44 (1336)
Croydon 46 (1312)
Eton 48 (1305)
Regis 50 (1364)
Seneca 52 (1315)
Silver Shell 54 (1046)

Silverplate & 18/10 Stainless Steel

Baguette 56 (T148/V148)
Lido 58 (T246/V246)
New Rim 60 (T015/V015)
New York 62 (T131/V131)
Pearl 64 (T163/V163)
Perimeter 66 (T936/V936)
Saumur 68 (T010/V101)

18/10 Stainless Steel

Apex 70 (T483)
Arbor Rose 72 (2552)
Astragal 74 (T119)
Cabria 76 (T958)
Chateau* 78 (2610)
Cheviot 80 (T389)
Cityscape 82 (2507)
Classic Shell 84 (2496)
Cooper 86 (T416)
Deauville 88 (T433)
Flight* 90 (2865)
Inn Classic 92 (2305)
Ivy Flourish 94 (T638)
Jade 96 (T057)
Julliard 98 (2273)
Lexia 100 (B576)
Libra 102 (T922)
Lonsdale* 104 (B740)

Marquette* 106 (2272)
Michelangelo 108 (2765)
Moda 110 (T711)
Moda Lux 112 (T133)
Needlepoint* 114 (2544)
Patrician 116 (T322)
Rio 118 (2621)
Satin Astragal 120 (T045)
Satinique 122 (2599)
Scroll* 124 (2201)
Sestina 126 (T301)
Stiletto 128 (2972)
Unity 130 (2347)
Verge 132 (T947)

* Denotes 18/8 composition.

Cover photo features Ivy Flourish flatware.



ONEIDA®

18/0 Stainless Steel

Acclivity 136 (B882)
Athena 138 (B986)
Bague 140 (B735)
Barcelona 142 (B169)
Camlynn 144 (T222)
Chef's Table 146 (B678)
Chef's Table Gold 148 (B408)
Chef's Table 150 (B327)
Hammered

Chef's Table Satin 152 (B449)
Glissade 154 (B636)
Hallmark 156 (2904)
Lumos 158 (B856)
Mascagni II 160 (B023)
New Rim II 162 (B914)
Noval 164 (B857)
Park Place 166 (B723)

Rosewood 168 (B990)
Shaker 170 (B600)
Stanford 172 (B167)
Tidal 174 (B443)
Titian 176 (B022)
Voss II 178 (B517)
Wyatt 180 (B582)

DELCO®

18/0 Stainless Steel

Adalee 184 (B784)
Belmore 186 (B561)
Brayleen 188 (B635)
Chloe 190 (B447)
Colton 192 (B485)
Dominion III 194 (B421)
Heavy Dominion 196 (B763)
Greystoke 198 (B080)
Laguna 200 (B606)
Lexington 202 (B070)
Melinda III 204 (B072)
Old English 206 (B817)
Pacific 208 (2669)

Prima 210 (B595)
Rhodes 212 (B176)
Village Common 214 (B393)
Windsor III 216 (B401)
Heavy Windsor 218 (B767)

Steak Knives 220
Custom Decorating 222
Quality Assurance 224





SANT' ANDREA®

18/10 Stainless Steel & Silverplate

Worthy of the most respected culinary establishments worldwide, Sant' Andrea designs complement a range of elegant tabletop decors — traditional to contemporary, casually elegant to the most formal. These extra heavyweight pieces are crafted in luxurious silverplate or the best 18/10 stainless steel. An ideal choice for fine dining, Sant'Andrea blends classic European themes with a contemporary sense of style.



Branded Touchmarks



Flat-Faced Bowls*



Coined Fork Tines*



Cantled Blade* & Brand

*On select patterns



Bellini™

18/10 Stainless Steel (T029) & Silverplate (V029)

A classic gently curving border reflects timeless elegance. This highly reflective flatware is worthy of the most respected culinary establishments worldwide. Bellini is a versatile design that complements most any fine dining dinnerware.

- 18/10 stainless steel
- Classic European styling
- Blades forged and waterground
- Superior finished edges, seams, and tips



Teaspoon, US Size
T029STSF
5¾" | 14.6 cm | 1 doz



Teaspoon, European Size
T029SFTF
5¼" | 13.3 cm | 1 doz



Oval Bowl Soup/Dessert Spoon
T029SDEF
6¾" | 17.1 cm | 1 doz



Round Bowl Soup Spoon
T029SRBF
6½" | 16.5 cm | 1 doz



Iced Tea Spoon
T029SITF
7⅞" | 18.1 cm | 1 doz



A.D. Coffee Spoon
T029SADF
4¼" | 10.8 cm | 1 doz



Tablespoon/Serving Spoon
T029STBF
7¾" | 19.7 cm | 1 doz



Table Fork, European Size
T029FDIF
7¾" | 19.7 cm | 1 doz



Salad/Dessert Fork
T029FDEF
6¾" | 17.1 cm | 1 doz



Oyster/Cocktail Fork
T029FOYF
5½" | 14.0 cm | 1 doz



Table Knife, 1-Pc.
T029KPTF
9½" | 24.1 cm | 1 doz



Dessert Knife, 1-Pc.
T029KDEF
8⅞" | 20.6 cm | 1 doz



Butter Knife, 1-Pc.
T029KBBF
6½" | 16.5 cm | 1 doz



Butter Spreader, 1-Pc.
T029KSBF
6½" | 16.5 cm | 1 doz



Fish Fork, 1-Pc.
T029FFSF
6¾" | 17.1 cm | 1 doz



Fish Knife, 1-Pc.
T029KFSF
7½" | 19.1 cm | 1 doz



Colosseum™

18/10 Stainless Steel (T061)

This traditional flatware design is reminiscent of the ancient amphitheater of Rome. Rich fluting and prominent bands define Colosseum's pillar-shaped handle. Colosseum is specially crafted in heavy weight, brightly polished 18/10 stainless steel.

- Finest quality 18/10 stainless
- Superior bright finish
- Carefully balanced heavy weight feel



Teaspoon, European Size
T061SFTF
5⁷/₈" | 14.9 cm | 1 doz



Teaspoon
T061STSF
6¹/₄" | 15.9 cm | 1 doz



Oval Bowl Soup/Dessert Spoon
T061SDEF
7⁷/₈" | 18.1 cm | 1 doz



A.D. Coffee Spoon
T061SADF
4¹/₂" | 11.4 cm | 1 doz



Bouillon Spoon
T061SBLF
6" | 15.2 cm | 1 doz



Tablespoon/Serving Spoon
T061STBF
9" | 22.9 cm | 1 doz



Table Fork, European Size
T061FEUF
8³/₄" | 21.0 cm | 1 doz



Salad/Dessert Fork
T061FDEF
7⁷/₈" | 18.1 cm | 1 doz



Oyster/Cocktail Fork
T061FOYF
5¹/₂" | 14.0 cm | 1 doz



Fish Fork
T061FFSF
7⁷/₈" | 18.1 cm | 1 doz



Butter Knife, 1-Pc.
T061KBVF
7⁷/₈" | 18.1 cm | 1 doz



Dinner Knife, 1-Pc.
T061KDTF
9⁵/₈" | 24.4 cm | 1 doz



Dessert Knife, 1-Pc.
T061KDAF
8¹/₂" | 21.6 cm | 1 doz



Steak Knife, 1-Pc.
T061KSSF
9⁵/₈" | 24.4 cm | 1 doz



Fish Knife, 1-Pc.
T061KFSF
7⁷/₈" | 20.0 cm | 1 doz



Corelli™

18/10 Stainless Steel (T168) & Silverplate (V168)

This European flatware design is noted for its smooth graceful form accented by a dimensional band at the tapered neck of the handle. This elegant pattern, crafted in an extra large heavy gauge format, presents an impressive tabletop statement for fine dining.

- 18/10 stainless steel
- Classic European styling
- Blades forged and waterground
- Superior finished edges, seams and tips



Teaspoon, US Size
T168STSF
6¼" | 15.9 cm | 1 doz



Oval Bowl Soup/Dessert Spoon
T168SDEF
7" | 17.8 cm | 1 doz



Round Bowl Soup Spoon
T168SRBF
6¾" | 17.1 cm | 1 doz



Iced Tea Spoon
T168SITF
7¼" | 18.4 cm | 1 doz



A.D. Coffee Spoon
T168SADF
4¼" | 10.8 cm | 1 doz



Tablespoon/Serving Spoon
T168STBF
8" | 20.3 cm | 1 doz



Table Fork, European Size
T168FDIF
8¾" | 21.0 cm | 1 doz



Salad/Dessert Fork
T168FDEF
7¼" | 18.4 cm | 1 doz



Oyster/Cocktail Fork
T168FOYF
5¾" | 14.6 cm | 1 doz



Table Knife, 1-Pc.
T168KPTF
9½" | 24.1 cm | 1 doz



Dessert Knife, 1-Pc.
T168KDEF
8¼" | 21.0 cm | 1 doz



Steak Knife, 1-Pc.
T168KSSF
9½" | 24.1 cm | 1 doz



Butter Knife, 1-Pc.
T168KBBF
6¾" | 17.1 cm | 1 doz



Butter Spreader, 1-Pc.
T168KSBF
6¾" | 17.1 cm | 1 doz



Fish Fork, 1-Pc.
T168FSLF
7¼" | 18.4 cm | 1 doz



Fish Knife, 1-Pc.
T168KFSF
8¾" | 21.0 cm | 1 doz



Donizetti™

18/10 Stainless Steel (T022) & Silverplate (V022)

Styled in classic European tradition, Donizetti delivers the finest 18/10 stainless on a timeless shape. This elite pattern celebrates a delicate, scrolled border that culminates in a majestic crown.

- 18/10 stainless steel
- Classic European styling
- Blades forged and waterground
- Superior finished edges, seams and tips



Teaspoon, US Size
T022STSF
5¾" | 14.6 cm | 1 doz



Teaspoon, European Size
T022SFTF
5⅝" | 13.7 cm | 1 doz



Oval Bowl Soup/Dessert Spoon
T022SDEF
7" | 17.8 cm | 1 doz



Round Bowl Soup Spoon
T022SRBF
6½" | 16.5 cm | 1 doz



Iced Tea Spoon
T022SITF
7¼" | 18.4 cm | 1 doz



A.D. Coffee Spoon
T022SADF
4¼" | 10.8 cm | 1 doz



Tablespoon/Serving Spoon
T022STBF
8" | 20.3 cm | 1 doz



Table Fork, European Size
T022FDIF
8" | 20.3 cm | 1 doz



Salad/Dessert Fork
T022FDEF
7" | 17.8 cm | 1 doz



Oyster/Cocktail Fork
T022FOYF
5½" | 14.0 cm | 1 doz



Table Knife, 1-Pc.
T022KPTF
9⅝" | 24.4 cm | 1 doz



Dessert Knife, 1-Pc.
T022KDEF
8¼" | 21 cm | 1 doz



Butter Knife, 1-Pc.
T022KBBF
6¾" | 17.1 cm | 1 doz



Butter Spreader, 1-Pc.
T022KSBF
6½" | 16.5 cm | 1 doz



Steak Knife, 1-pc
T022KSSF
9½" | 24.1 cm | 1 doz



Fish Fork, 1-Pc.
T022FFSF
7" | 17.8 cm | 1 doz



Fish Knife, 1-Pc.
T022KFSF
7½" | 19.1 cm | 1 doz



Elevation™

18/10 Stainless Steel (T283) & Silverplate (V283)

Elevation is a modern design who's form follows function, and the details are revealed in with a less is more aesthetic. This pattern features cantele knife blades, coined fork tines, and flat-faced bowls; luxurious details that show off the beauty of the design.

- 18/10 stainless steel
- High polish mirror finish
- Luxury details: Cantele knife blades, coined fork tines and flat-faced bowls



Teaspoon
T283STSF
6½" | 16.5 cm | 1 doz



Teaspoon, European Size
T283SFTF
5¾" | 14.9 cm | 1 doz



Oval Bowl Soup/Dessert Spoon
T283SDEF
7" | 17.8 cm | 1 doz



Round Bowl Soup Spoon
T283SRBF
6¾" | 17.1 cm | 1 doz



Iced Tea Spoon
T283SITF
7¼" | 18.4 cm | 1 doz



A.D. Coffee Spoon
T283SADF
4½" | 11.4 cm | 1 doz



Tablespoon/Serving Spoon
T283STBF
8¾" | 20.6 cm | 1 doz



Table Fork, European Size
T283FEUF
8¼" | 21.0 cm | 1 doz



Dinner Fork
T283FDNF
7¾" | 20.0 cm | 1 doz



Dessert/Salad Fork
T283FDEF
7½" | 18.1 cm | 1 doz



Oyster/Cocktail Fork
T283FOYF
5½" | 14.0 cm | 1 doz



Fish Fork
T283FFSF
7½" | 18.1 cm | 1 doz



Dinner Knife, 1-Pc.
T283KDTF
9½" | 24.1 cm | 1 doz



Dessert Knife, 1-Pc.
T283KDAF
8¼" | 21.0 cm | 1 doz



Steak Knife, 1-Pc.
T283KSSF
9½" | 24.1 cm | 1 doz



Butter Knife, 1-Pc.
T283KBVF
7" | 17.8 cm | 1 doz



Fish Knife, 1-Pc.
T283KFSF
7¾" | 19.4 cm | 1 doz



Fulcrum™

18/10 Stainless Steel (T657) & Silverplate (V657)

Fulcrum features a balanced and seamless modern design that presents the ultimate in style, quality, and luxury. Comfortable in classic or modern interiors, this pattern is also available in a satin brush (T812) finish.

- Finest quality 18/10 stainless
- Superior finish
- Carefully balanced heavy weight feel
- Unique integrated knife rest keeps blade off the table surface



Teaspoon, European Size

T657SFTF
6" | 15.2 cm | 1 doz



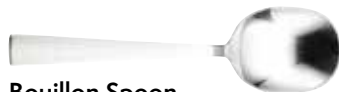
Teaspoon

T657STSF
6¾" | 16.2 cm | 1 doz



Oval Bowl Soup/Dessert Spoon

T657SDEF
7¾" | 18.1 | 1 doz



Bouillon Spoon

T657SBLF
6¼" | 15.9 cm | 1 doz



Iced Tea Spoon

T657SITF
7¾" | 18.7 cm | 1 doz



A.D. Coffee Spoon

T657SADF
4½" | 11.4 cm | 1 doz



Tablespoon/Serving Spoon

T657STBF
8¾" | 22.2 cm | 1 doz



Dinner Fork, European Size

T657FEUF
8¾" | 22.2 cm | 1 doz



Dinner Fork

T657FDNF
8" | 20.3 cm | 1 doz



Salad/Dessert Fork

T657FDEF
7¾" | 18.1 cm | 1 doz



Oyster/Cocktail Fork

T657FOYF
6¾" | 16.2 cm | 1 doz



Fish Fork, 1-Pc.

T657FFSF
7¾" | 18.1 cm | 1 doz



Table Knife, 1-Pc.

T657KPVF
9¼" | 23.5 cm | 1 doz



Dessert Knife, 1-Pc.

T657KDAF
8½" | 21.6 cm | 1 doz



Steak Knife, 1-Pc.

T657KSSF
9½" | 24.1 cm | 1 doz



Butter Knife, 1-Pc.

T657KBVF
7" | 17.8 cm | 1 doz



Pierced Tablespoon

T657SPTF
8¾" | 22.2 cm | 1 doz



Banquet Fork

T657FBNF
13" | 33.0 cm | 1 doz



Banquet Spoon

T657SBNF
13" | 33.0 cm | 1 doz



Banquet Spoon, Pierced

T657SBSF
13" | 33.0 cm | 1 doz



Cold Meat Fork

T657FCMF
8¾" | 22.5 cm | 1 doz



Fish Knife, 1-Pc.

T657KFSS
7¾" | 19.7 cm | 1 doz



Sauce Ladle

T657MSLF
5¾" | 14.6 cm | 1 doz

Prefix "V" is silverplate (special order) | Prefix "T" is stainless



Mascagni™

18/10 Stainless Steel (T023) & Silverplate (V023)

This fine flatware boasts a sleekly crafted handle with a softly rounded tip. Mascagni is at home on virtually any tabletop, from casually elegant to the most formal.

- 18/10 stainless steel
- Classic European styling
- Blades forged and waterground
- Superior finished edges, seams and tips



Teaspoon, US Size
T023STSF
5¾" | 14.6 cm | 1 doz



Teaspoon, European Size
T023SFTF
5¾" | 13.7 cm | 1 doz



Oval Bowl Soup/Dessert Spoon
T023SDEF
7" | 17.8 cm | 1 doz



Round Bowl Soup Spoon
T023SRBF
6¾" | 16.8 cm | 1 doz



Iced Tea Spoon
T023SITF
7¼" | 18.4 cm | 1 doz



A.D. Coffee Spoon
T023SADF
4¾" | 11.1 cm | 1 doz



Tablespoon/Serving Spoon
T023STBF
8¾" | 20.6 cm | 1 doz



Table Fork, European Size
T023FDIF
8" | 20.3 cm | 1 doz



Salad/Dessert Fork
T023FDEF
7" | 17.8 cm | 1 doz



Oyster/Cocktail Fork
T023FOYF
5½" | 14.0 cm | 1 doz



Table Knife, 1-Pc.
T023KPTF
9¼" | 23.5 cm | 1 doz



Dessert Knife, 1-Pc.
T023KDEF
8¼" | 21.0 cm | 1 doz



Steak Knife, 1-Pc.
T023KSSF
9½" | 24.1 cm | 1 doz



Butter Knife, 1-Pc.
T023KBBF
7¾" | 18.1 cm | 1 doz



Butter Spreader, 1-Pc.
T023KSBF
6½" | 16.5 cm | 1 doz



Fish Fork, 1-Pc.
T023FFSF
7" | 17.8 cm | 1 doz



Fish Knife, 1-Pc.
T023KFSF
7¾" | 19.7 cm | 1 doz



Puccini™

18/10 Stainless Steel (T030) & Silverplate (V030)

Puccini delivers exceptional durability, comfort and balance on its highly polished, tear-shaped handle. A pattern for the purist, this fine quality flatware is saluted for its clean styling and versatility.

- 18/10 stainless steel
- Classic European styling
- Blades forged and waterground
- Superior finished edges, seams, and tips



Teaspoon, US Size
T030STSF
5¾" | 14.6 cm | 1 doz



Teaspoon, European Size
T030SFTF
5½" | 14.0 cm | 1 doz



Oval Bowl Soup/Dessert Spoon
T030SDEF
6¾" | 17.1 cm | 1 doz



Round Bowl Soup Spoon
T030SRBF
6½" | 16.5 cm | 1 doz



Iced Tea Spoon
T030SITF
7¼" | 18.4 cm | 1 doz



A.D. Coffee Spoon
T030SADF
4¼" | 10.8 cm | 1 doz



Tablespoon/Serving Spoon
T030STBF
8" | 20.3 cm | 1 doz



Table Fork, European Size
T030FDIF
8" | 20.3 cm | 1 doz



Salad/Dessert Fork
T030FDEF
6¾" | 17.1 cm | 1 doz



Oyster/Cocktail Fork
T030FOYF
5½" | 14.0 cm | 1 doz



Table Knife, 1-Pc.
T030KPTF
9¼" | 23.5 cm | 1 doz



Dessert Knife, 1-Pc.
T030KDEF
8" | 20.3 cm | 1 doz



Butter Knife, 1-Pc.
T030KBBF
7" | 17.8 cm | 1 doz



Butter Spreader, 1-Pc.
T030KSBF
6¾" | 16.2 cm | 1 doz



Fish Fork, 1-Pc.
T030FFSF
7" | 17.8 cm | 1 doz



Fish Knife, 1-Pc.
T030KFSF
7¼" | 18.4 cm | 1 doz



Quantum™

18/10 Stainless Steel (T673) & Silverplate (V673)

This pattern makes a "quantum leap" in modern flatware with its ultra sleek shape and smooth delivery. Add this silverware into your dining equation. You won't be disappointed.

- Heavy gauge 18/10 stainless
- Superior finish
- Perfectly balanced for comfort and handling



Teaspoon, European Size
T673SFTF
5¾" | 14.6 cm | 1 doz



Teaspoon
T673STSF
6¼" | 15.9 cm | 1 doz



Oval Bowl Soup/Dessert Spoon
T673SDEF
7½" | 19.1 cm | 1 doz



Round Bowl Soup Spoon
T673SRBF
7" | 17.8 cm | 1 doz



Dinner Spoon
T673SDIF
8½" | 21.6 cm | 1 doz



Iced Tea Spoon
T673SITF
7" | 17.8 cm | 1 doz



A.D. Coffee Spoon
T673SADF
4¾" | 12.1 cm | 1 doz



Tablespoon/Serving Spoon
T673STBF
9" | 22.9 cm | 1 doz



Table Fork, European Size
T673FDIF
8½" | 21.6 cm | 1 doz



Salad/Dessert Fork
T673FDEF
7½" | 19.1 cm | 1 doz



Pastry/Oyster Fork
T673FSLF
6" | 15.2 cm | 1 doz



Fish Fork, 1-Pc.
T673FFSF
7¼" | 18.4 cm | 1 doz



Table Knife, 1-Pc. (Stand-Up)
T673KPTE
9⅝" | 24.4 cm | 1 doz



Dinner Knife, 1-Pc.
T673KDTE
9⅝" | 24.4 cm | 1 doz



Dessert Knife, 1-Pc. (Stand-Up)
T673KDEF
8¾" | 22.2 cm | 1 doz



Butter Knife, 1-Pc. (Stand-Up)
T673KSBF
7" | 17.8 cm | 1 doz



Fish Knife, 1-Pc.
T673KFSF
8¼" | 21.0 cm | 1 doz



Reflections™

18/10 Stainless Steel (T672) & Silverplate (V672)

This pattern is reminiscent of a reflecting pool with its generously shaped handle and bright, sparkling finish. Designed with balance and comfort in mind, this flatware feels as great as it looks.

- Finest quality 18/10 stainless
- Contemporary European styling
- Superior finish and balance



Teaspoon, European Size
T672SFTF
5½" | 14.0 cm | 1 doz



Teaspoon
T672STSF
6¼" | 15.9 cm | 1 doz



Oval Bowl Soup/Dessert Spoon
T672SDEF
7½" | 19.1 cm | 1 doz



Round Bowl Soup Spoon
T672SRBF
7" | 17.8 cm | 1 doz



Iced Tea Spoon
T672SITF
7" | 17.8 cm | 1 doz



A.D. Coffee Spoon
T672SADF
4¾" | 12.1 cm | 1 doz



Tablespoon/Serving Spoon
T672STBF
9" | 22.9 cm | 1 doz



Dinner Spoon
T672SDIF
8½" | 21.6 cm | 1 doz



Table Fork, European Size
T672FDIF
8½" | 21.6 cm | 1 doz



Salad/Dessert Fork
T672FDEF
7½" | 19.1 cm | 1 doz



Oyster/Cocktail Fork
T672FSLF
5½" | 14.0 cm | 1 doz



Fish Fork, 1-Pc.
T672FFSF
7¼" | 18.4 cm | 1 doz



Table Knife, 1-Pc.
T672KPTF
9½" | 24.1 cm | 1 doz



Dessert Knife, 1-Pc.
T672KDEF
8¾" | 22.2 cm | 1 doz



Steak Knife, 1-Pc.
T672KSSF
9½" | 24.1 cm | 1 doz



Butter Knife, 1-Pc.
T672KSBF
6¾" | 17.1 cm | 1 doz



Fish Knife, 1-Pc.
T672KFSF
8½" | 21.6 cm | 1 doz



Rossini™

18/10 Stainless Steel (T314) & Silverplate (V314)

Incised lines along the handle culminate at the tip in a majestic crown detail. This stunning stainless design blends classic European themes with a contemporary sense of style.

- 18/10 stainless steel
- Classic European styling
- Blades forged and waterground
- Superior finished edges, seams, and tips



Teaspoon, US Size
T314STSF
6" | 15.2 cm | 1 doz



Teaspoon, European Size
T314SFTF
5½" | 14.0 cm | 1 doz



Oval Bowl Soup/Dessert Spoon
T314SDEF
7½" | 19.1 cm | 1 doz



Round Bowl Soup Spoon
T314SRBF
6¾" | 17.1 cm | 1 doz



Iced Tea Spoon
T314SITF
7" | 17.8 cm | 1 doz



A.D. Coffee Spoon
T314SADF
4½" | 11.4 cm | 1 doz



Tablespoon/Serving Spoon
T314STBF
8" | 20.3 cm | 1 doz



Table Fork, European Size
T314FDIF
8" | 20.3 cm | 1 doz



Salad/Dessert Fork
T314FDEF
7½" | 19.1 cm | 1 doz



Oyster/Cocktail Fork
T314FOYF
5½" | 14.0 cm | 1 doz



Table Knife, 1-Pc.
T314KPTF
9¾" | 24.8 cm | 1 doz



Dessert Knife, 1-Pc.
T314KDEF
9" | 22.9 cm | 1 doz



Steak Knife, 1-Pc.
T314KSSF
9¾" | 24.8 cm | 1 doz



Butter Knife, 1-Pc.
T314KBBF
7½" | 18.1 cm | 1 doz



Butter Spreader, 1-Pc.
T314KSBF
6¼" | 15.9 cm | 1 doz



Satin Fulcrum™

18/10 Stainless Steel (T812)

Satin Fulcrum features a balanced and seamless modern design that presents the ultimate in style, quality, and luxury. Comfortable in classic or modern interiors, this pattern is also available in a bright (T657) finish.

- Finest quality 18/10 stainless
- Superior finish
- Carefully balanced heavy weight feel
- Unique integrated knife rest keeps blade off the table surface



Teaspoon, European Size

T812SFTF
6" | 15.2 cm | 1 doz



Teaspoon

T812STSF
6¾" | 16.2 cm | 1 doz



Oval Bowl Soup/Dessert Spoon

T812SDEF
7¾" | 18.1 cm | 1 doz



Bouillon Spoon

T812SBLF
6¼" | 15.9 cm | 1 doz



Iced Tea Spoon

T812SITF
7¾" | 18.7 cm | 1 doz



A.D. Coffee Spoon

T812SADF
4½" | 11.4 cm | 1 doz



Tablespoon/Serving Spoon

T812STBF
8¾" | 22.2 cm | 1 doz



Dinner Fork, European Size

T812FEUF
8¾" | 22.2 cm | 1 doz



Dinner Fork

T812FDNF
8" | 20.3 cm | 1 doz



Salad/Dessert Fork

T812FDEF
7" | 17.8 cm | 1 doz



Oyster/Cocktail Fork

T812FOYF
6¾" | 16.2 cm | 1 doz



Fish Fork, 1-Pc.

T812FFSF
7¾" | 18.1 cm | 1 doz



Table Knife, 1-Pc.

T812KPVF
9¼" | 23.5 cm | 1 doz



Dessert Knife, 1-Pc.

T812KDAF
8½" | 21.6 cm | 1 doz



Steak Knife, 1-Pc.

T812KSSF
9½" | 24.1 cm | 1 doz



Butter Knife, 1-Pc.

T812KBVF
6¾" | 17.1 cm | 1 doz



Pierced Tablespoon

T812SPTF
8¾" | 22.2 cm | 1 doz



Cold Meat Fork

T812FCMF
8¾" | 22.5 cm | 1 doz



Fish Knife, 1-Pc.

T812KFSF
7¾" | 19.7 cm | 1 doz



Sauce Ladle

T812MSLF
5¾" | 14.6 cm | 1 doz



Satin Reflections™

18/10 Stainless Steel (T528)

Designed with balance and comfort in mind, this flatware pattern feels as great as it looks. It has a generously shaped handle with a beautiful satin finish that will complement any fine dining dinnerware.

- Finest quality 18/10 stainless
- Contemporary European styling
- Superior finish and balance



Teaspoon
T528STSF
6¼" | 15.9 cm | 1 doz



Oval Bowl Soup/Dessert Spoon
T528SDEF
7½" | 19.1 cm | 1 doz



Round Bowl Soup Spoon
T528SRBF
7" | 17.8 cm | 1 doz



A.D. Coffee Spoon
T528SADF
4¾" | 12.1 cm | 1 doz



Table Fork, European Size
T528FDIF
8½" | 21.6 cm | 1 doz



Salad/Dessert Fork
T528FDEF
7½" | 19.1 cm | 1 doz



Table Knife, 1-Pc.
T528KPTF
9½" | 24.1 cm | 1 doz



Dessert Knife, 1-Pc.
T528KDEF
8¾" | 22.2 cm | 1 doz



Butter Knife, 1-Pc.
T528KSBF
6¾" | 17.1 cm | 1 doz



Scarlatti™

18/10 Stainless Steel (T018) & Silverplate (V018)

Crafted in the classic European tradition, this fine flatware feels exceptionally weighty and balanced in your hand. Its simple, teardrop-shaped design offers unlimited possibilities.

- 18/10 stainless steel
- Classic European styling
- Blades forged and waterground
- Superior finished edges, seams and tips



Teaspoon, US Size
T018STSF
6¼" | 15.9 cm | 1 doz



Teaspoon, European Size
T018SFTF
5½" | 14.0 cm | 1 doz



Oval Bowl Soup/Dessert Spoon
T018SDEF
7¼" | 18.4 cm | 1 doz



Round Bowl Soup Spoon
T018SRBF
6¾" | 17.1 cm | 1 doz



Iced Tea Spoon
T018SITF
7½" | 19.1 cm | 1 doz



A.D. Coffee Spoon
T018SADF
4¾" | 12.1 cm | 1 doz



Tablespoon/Serving Spoon
T018STBF
8¾" | 21.0 cm | 1 doz



Table Fork, European Size
T018FDIF
8½" | 21.6 cm | 1 doz



Salad/Dessert Fork
T018FDEF
7¼" | 18.4 cm | 1 doz



Oyster/Cocktail Fork
T018FOYF
5⅝" | 14.9 cm | 1 doz



Table Knife, 1-Pc.
T018KPTF
9¾" | 24.8 cm | 1 doz



Steak Knife, 1-Pc.
T018KSSF
9½" | 24.1 cm | 1 doz



Butter Knife, 1-Pc.
T018KBFF
6¾" | 17.1 cm | 1 doz



Dessert Knife
T018KDEF
8½" | 21.6 cm | 1 doz



Butter Spreader, 1-Pc.
T018KSBF
6½" | 16.5 cm | 1 doz



Fish Knife, 1-Pc.
T018KFSS
8¾" | 21.0 cm | 1 doz



Fish Fork, 1-Pc.
T018FFSF
7¼" | 18.4 cm | 1 doz



Vasari™

18/10 Stainless Steel (T009)

Vasari has a traditional feel with a modern edge. This beautifully polished stainless steel design balances a distinctive heavy weight with a delicate curved handle that will accent any traditional, formal, or contemporary table setting.

- Finest quality 18/10 stainless steel
- Heavy gauge
- High polish mirror finish



Teaspoon, US Size
T009STSF
6" | 15.2 cm | 1 doz



Oval Bowl Soup/Dessert Spoon
T009SDEF
7¼" | 18.4 cm | 1 doz



Round Bowl Soup Spoon
T009SRBF
7" | 17.8 cm | 1 doz



Iced Tea Spoon
T009SITF
8⅝" | 20.6 cm | 1 doz



A.D. Coffee Spoon
T009SADF
4¾" | 11.7 cm | 1 doz



Tablespoon/Serving Spoon
T009STBF
9¾" | 24.8 cm | 1 doz



Table Fork, US Size
T009FDNF
8⅝" | 20.6 cm | 1 doz



Table Fork, European Size
T009FEUF
8¼" | 21.0 cm | 1 doz



Salad/Dessert Fork
T009FDEF
7⅝" | 18.1 cm | 1 doz



Oyster/Cocktail Fork
T009FOYF
5½" | 14.0 cm | 1 doz



Dinner Knife (SH)
T009KDTF
9¼" | 23.5 cm | 1 doz



Standup Steak Knife (Serrated)
T009KSSF
9⅝" | 23.8 cm | 1 doz



Butter Knife
T009KBVF
6⅝" | 17.5 cm | 1 doz



Verdi™

18/10 Stainless Steel (T031) & Silverplate (V031)

Verdi is distinguished by its smooth Art Deco arch at the handle tip. This fine flatware, from the Sant' Andrea Collection, complements a wide range of tabletop décors.

- 18/10 stainless steel
- Classic European styling
- Blades forged and waterground
- Superior finished edges, seams and tips



Teaspoon, US Size
T031STSF
5¾" | 14.6 cm | 1 doz



Teaspoon, European Size
T031SFTF
5¼" | 13.3 cm | 1 doz



Oval Bowl Soup/Dessert Spoon
T031SDEF
6¾" | 17.1 cm | 1 doz



Round Bowl Soup Spoon
T031SRBF
6½" | 16.5 cm | 1 doz



Iced Tea Spoon
T031SITF
7" | 17.8 cm | 1 doz



A.D. Coffee Spoon
T031SADF
4¼" | 10.8 cm | 1 doz



Tablespoon/Serving Spoon
T031STBF
7¾" | 19.7 cm | 1 doz



Table Fork, European Size
T031FDIF
7¾" | 19.7 cm | 1 doz



Salad/Dessert Fork
T031FDEF
7" | 17.8 cm | 1 doz



Oyster/Cocktail Fork
T031FOYF
5½" | 14.0 cm | 1 doz



Table Knife, 1-Pc.
T031KPTF
9½" | 24.1 cm | 1 doz



Dessert Knife, 1-Pc.
T031KDEF
8¾" | 21.0 cm | 1 doz



Butter Knife, 1-Pc.
T031KBBF
6¾" | 17.1 cm | 1 doz



Fish Fork, 1-Pc.
T031FFSF
6¾" | 17.1 cm | 1 doz



Fish Knife, 1-Pc.
T031KFSF
7¼" | 18.4 cm | 1 doz



Viotti™

18/10 Stainless Steel (T024) & Silverplate (V024)

Symmetrical vertical panels dominate the handle of this fine flatware design to create a majestic pillar effect. An ideal choice for the finest dining establishments, this Sant' Andrea pattern blends classic European themes with a contemporary sense of style.

- 18/10 stainless steel
- Classic European styling
- Blades forged and waterground
- Superior finished edges, seams and tips



Teaspoon, US Size
T024STSF
5¾" | 14.6 cm | 1 doz



Teaspoon, European Size
T024SFTF
5¼" | 13.3 cm | 1 doz



Oval Bowl Soup/Dessert Spoon
T024SDEF
6¾" | 17.1 cm | 1 doz



Round Bowl Soup Spoon
T024SRBF
6⅝" | 16.8 cm | 1 doz



Iced Tea Spoon
T024SITF
7¼" | 18.4 cm | 1 doz



A.D. Coffee Spoon
T024SADF
4¼" | 10.8 cm | 1 doz



Tablespoon/Serving Spoon
T024STBF
7¾" | 19.7 cm | 1 doz



Table Fork, European Size
T024FDIF
7¾" | 19.7 cm | 1 doz



Salad/Dessert Fork
T024FDEF
6¾" | 17.1 cm | 1 doz



Oyster/Cocktail Fork
T024FOYF
5⅝" | 14.3 cm | 1 doz



Table Knife, 1-Pc.
T024KPTF
9½" | 24.1 cm | 1 doz



Dessert Knife, 1-Pc.
T024KDEF
8¼" | 21.0 cm | 1 doz



Steak Knife, 1-Pc.
T024KSSF
9⅞" | 23.8 cm | 1 doz



Butter Knife, 1-Pc.
T024KBBF
6¾" | 17.1 cm | 1 doz



Butter Spreader, 1-Pc.
T024KSBF
6½" | 16.5 cm | 1 doz



Fish Fork, 1-Pc.
T024FFSF
7" | 17.8 cm | 1 doz



Fish Knife, 1-Pc.
T024KFSS
7½" | 19.1 cm | 1 doz

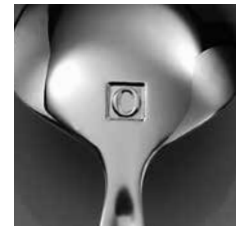




Silverplate and 18/10 Stainless Steel

Combining prestige with enduring excellence, many of Oneida's most popular designs are part of this collection. This durable 18/10 stainless collection provides maximum protection against corrosion and attacks by food and cleaning chemicals, as well as a lustrous appearance.

- High quality 18/10 stainless
- Superb finish and pattern detail
- Combines elegance with long-lasting durability



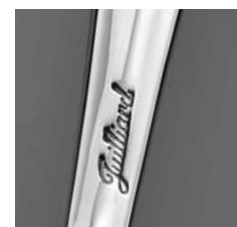
Branded Touchmark



Branded Backstamp



Branded Knife Blade



Pattern Name
On Teaspoons





Astragal™

Silverplate (1119)

Elaborately crafted and finished in fine silverplate, Astragal features prominent architectural bands encircling its teardrop-shaped handle. This distinctive design element is repeated again at the shank, bringing a tailored look to your tabletop. Pair this versatile flatware with banded or plain dinnerware.

- Silverplate
- Long lasting durability
- Reasonable cost for burnishing



Teaspoon, US Size
1119STSF
6" | 15.2 cm | 1 doz



Oval Bowl Soup/Dessert Spoon
1119SDEF
6¾" | 17.1 cm | 1 doz



Round Bowl Soup Spoon
1119SRBF
6⅝" | 16.8 cm | 3 doz



Iced Tea Spoon
1119SITF
7½" | 19.1 cm | 3 doz



A.D. Coffee Spoon
1119SADF
4¾" | 11.1 cm | 1 doz



Tablespoon/Serving Spoon
1119STBF
8⅝" | 21.3 cm | 3 doz



Dinner Fork
1119FDNF
7½" | 19.1 cm | 3 doz



Table Fork, European Size
1119FDLF
8¼" | 21.0 cm | 3 doz



Dessert Fork
1119FDEF
6¾" | 17.1 cm | 3 doz



Salad/Pastry Fork
1119FSLF
6¾" | 17.1 cm | 3 doz



Oyster/Cocktail Fork
1119FOYF
6⅝" | 15.6 cm | 3 doz



Dinner Knife, 1-Pc.
1119KDNF
9⅝" | 23.8 cm | 3 doz



Butter Knife, 1-Pc.
1119KBTF
7¼" | 18.4 cm | 3 doz





Becket™

Silverplate (1336)

A distinctive border of symmetric lines flow around Becket's teardrop shaped handle. This simple silverplated flatware design will complement any table setting, contemporary or traditional.

- Silverplate
- Long lasting durability
- Reasonable cost for burnishing



Teaspoon
1336STSF
6½" | 15.6 cm | 3 doz



Bouillon Spoon
1336SSGF
6" | 15.2 cm | 3 doz



Round Bowl Soup Spoon
1336SRBF
7½" | 18.1 cm | 3 doz



Iced Tea Spoon
1336SITF
7½" | 19.1 cm | 3 doz



A.D. Coffee Spoon
1336SADF
4½" | 11.4 cm | 3 doz



Dinner Spoon, European Size
1336SDIF
7½" | 19.1 cm | 3 doz



Tablespoon/Serving Spoon
1336STBF
8" | 20.3 cm | 3 doz



Dinner Fork
1336FDNF
7½" | 19.1 cm | 3 doz



Table Fork, European Size
1336FEUF
8" | 20.3 cm | 3 doz



Salad/Pastry Fork
1336FSLF
6¾" | 17.1 cm | 3 doz



Oyster/Cocktail Fork
1336FOYF
6½" | 15.6 cm | 3 doz



Dinner Knife, 1-Pc.
1336KDVF
9¾" | 24.4 cm | 3 doz



Butter Spreader, 1-Pc.
1336KSBF
7½" | 18.1 cm | 3 doz





Croydon™

Silverplate (1312)

This traditional flatware design showcases delicate scrollwork on a graceful silverplated shape. Place this pattern next to decorative or plain dinnerware for a timeless presentation.

- Silverplate
- Long lasting durability
- Reasonable cost for burnishing



Teaspoon
1312STSF
6" | 15.2 cm | 3 doz



Oval Bowl Soup/Dessert Spoon
1312SPLF
6¾" | 17.1 cm | 3 doz



Bouillon Spoon
1312SBLF
5¾" | 14.6 cm | 3 doz



A.D. Coffee Spoon
1312SADF
4¾" | 11.1 cm | 3 doz



Tablespoon/Serving Spoon
1312STBF
8½" | 21.6 cm | 3 doz



Dinner Fork
1312FRSF
7¼" | 18.4 cm | 3 doz



Salad/Pastry Fork
1312FSLF
6½" | 16.5 cm | 3 doz



Oyster/Cocktail Fork
1312FOYF
6" | 15.2 cm | 3 doz



Dinner Knife, 1-Pc.
1312KPVF
8¼" | 21.0 cm | 3 doz



Steak Knife, 1-Pc.
1312KSSF
9" | 22.9 cm | 3 doz



Dinner Knife, 1-Pc. Heavyweight
1312KDVF
9½" | 23.2 cm | 3 doz



Butter Spreader, F.H.
1312KSBF
6" | 15.2 cm | 3 doz



Butter Spreader, 1-Pc.
1312KSBG
7⅞" | 18.1 cm | 3 doz



Eton™

Silverplate (1305)*

The fluted border and beveled end of Eton brings a simple beauty to your tabletop. This silverplated flatware goes with virtually any dinnerware. This popular design offers an impressive array of pieces including a one-piece steak knife.

- Silverplate
- Long lasting durability
- Reasonable cost for burnishing



Teaspoon
1305STSF
6" | 15.2 cm | 3 doz



Oval Bowl Soup/Dessert Spoon
1305SDEF
7¼" | 18.4 cm | 3 doz



Bouillon Spoon
1305SBLF
5¾" | 14.6 cm | 3 doz



Iced Tea Spoon
1305SITF
7¼" | 18.4 cm | 3 doz



A.D. Coffee Spoon
1305SADF
4¼" | 10.8 cm | 3 doz



Tablespoon/Serving Spoon
1305STBF
8⅞" | 20.6 cm | 3 doz



Dinner Fork
1305FRSF
7¼" | 18.4 cm | 3 doz



Table Fork, European Size
1305FDLF
8½" | 21.6 cm | 3 doz



Salad/Pastry Fork
1305FSLF
6⅝" | 16.8 cm | 3 doz



Oyster/Cocktail Fork
1305FOYF
6" | 15.2 cm | 3 doz



Dinner Knife, 1-Pc., Heavyweight
1305KDVG
9½" | 24.1 cm | 3 doz



Dinner Knife, 1-Pc., Lightweight
1305KDVF
8½" | 21.6 cm | 3 doz



Dessert Knife, 1-Pc.
1305KBVF
8" | 20.3 cm | 1 doz



Steak Knife, 1-Pc.
1305KSSF
9½" | 24.1 cm | 3 doz



Butter Spreader, F.H.
1305KSBF
6⅞" | 15.6 cm | 3 doz



Butter Spreader, 1-Pc.
1305KSBG
7" | 17.8 cm | 3 doz



Regis™

Silverplate (1364)

Distinct beauty is found in the clean lines that highlight the simple shape of Regis. This versatile, silverplate design can be matched with most dinnerware.

- Silverplate
- Long lasting durability
- Reasonable cost for burnishing



Teaspoon
1364STSF
6" | 15.2 cm | 3 doz



Oval Bowl Soup/Dessert Spoon
1364SDEF
7¼" | 18.4 cm | 3 doz



Bouillon Spoon
1364SBLF
5¾" | 14.6 cm | 3 doz



Round Bowl Soup Spoon
1364SRBF
6¾" | 17.1 cm | 3 doz



Iced Tea Spoon
1364SITF
7¼" | 18.4 cm | 3 doz



A.D. Coffee Spoon
1364SADF
4¼" | 10.8 cm | 3 doz



Tablespoon/Serving Spoon
1364STBF
8½" | 20.6 cm | 3 doz



Dinner Fork
1364FRSF
7¼" | 18.4 cm | 3 doz



Table Fork, European Size
1364FEUF
8" | 20.3 cm | 3 doz



Salad/Pastry Fork
1364FSLF
6½" | 16.5 cm | 3 doz



Oyster/Cocktail Fork
1364FOYF
6" | 15.2 cm | 3 doz



Dinner Knife, 1-Pc.
1364KPTF
8¾" | 21.3 cm | 3 doz



Dinner Knife, 1-Pc., Heavyweight
1364KDVG
8¾" | 21.9 cm | 3 doz



Butter Spreader, F.H.
1364KSBF
6½" | 15.6 cm | 3 doz





Seneca™

Silverplate (1315)

Seneca was created for the most gracious table settings. Beautiful bevels accent the crisp edges of this classic silverplate design.

- Silverplate
- Long lasting durability
- Reasonable cost for burnishing



Teaspoon
1315STSF
5¾" | 14.6 cm | 3 doz



Oval Bowl Soup/Dessert Spoon
1315SDEF
7" | 17.8 cm | 3 doz



Bouillon Spoon
1315SBLF
5½" | 14.0 cm | 3 doz



A.D. Coffee Spoon
1315SADF
4½" | 11.4 cm | 3 doz



Tablespoon/Serving Spoon
1315STBF
7⅞" | 20.0 cm | 3 doz



Dinner Fork
1315FRSF
7¼" | 18.4 cm | 3 doz



Salad/Pastry Fork
1315FSLF
6½" | 16.5 cm | 3 doz



Oyster/Cocktail Fork
1315FOYF
6" | 15.2 cm | 3 doz



Dinner Knife, 1-Pc.
1315KDVG
9" | 22.9 cm | 3 doz



Butter Spreader, 1-Pc.
1315KSBG
7" | 17.8 cm | 3 doz



Butter Spreader, F.H.
1315KSBF
5½" | 14.0 cm | 3 doz





Silver Shell™

Silverplate (1046)

This timeless flatware captures the ever-popular shell motif in lustrous silverplate. This durable design becomes more beautiful with every use. Exceptional pattern detail adds elegance to your dining presentation.

- Silverplate
- Long lasting durability
- Reasonable cost for burnishing



Teaspoon
1046STSF
6" | 15.2 cm | 3 doz



Oval Bowl Soup/Dessert Spoon
1046SPLF
6¾" | 17.1 cm | 3 doz



Bouillon Spoon
1046SBLF
6" | 15.2 cm | 3 doz



A.D. Coffee Spoon
1046SADF
4½" | 11.4 cm | 3 doz



Dinner Fork
1046FDNF
7⅞" | 19.4 cm | 3 doz



Salad/Pastry Fork
1046FSLF
6¾" | 17.1 cm | 3 doz



Butter Spreader, 1-Pc.
1046KSBF
6¾" | 17.1 cm | 3 doz



Dinner Knife, 1-Pc.
1046KDVF
9⅞" | 23.8 cm | 3 doz





Baguette™

18/10 Stainless Steel (T148) & Silverplate (V148)

A teardrop-shaped handle is divided into two identical panels by a vertical ridge line, reflecting contemporary flair. This exceptionally well crafted fine flatware pattern is the perfect complement to fine dinnerware and stemware.

- 18/10 stainless steel
- Continental sizing
- American and European décors
- Recommended for use in the healthcare industry



Teaspoon, US Size
T148STSF
6¼" | 15.9 cm | 1 doz



Teaspoon, European Size
T148SFTF
5½" | 14.0 cm | 1 doz



Oval Bowl Soup/Dessert Spoon
T148SDEF
7" | 17.8 cm | 1 doz



Bouillon Spoon
T148SBLF
6" | 15.2 cm | 1 doz



Iced Tea Spoon
T148SITF
8" | 20.3 cm | 1 doz



A.D. Coffee Spoon
T148SADF
4¾" | 12.1 cm | 1 doz



Tablespoon/Serving Spoon
T148STBF
8½" | 21.6 cm | 1 doz



Dinner Fork
T148FDEF
7¼" | 18.4 cm | 1 doz



Table Fork, European Size
T148FDIF
8½" | 21.6 cm | 1 doz



Salad/Pastry Fork
T148FSLF
6½" | 16.5 cm | 1 doz



Oyster/Cocktail Fork
T148FOYF
5" | 12.7 cm | 1 doz



Fish Fork, 1-Pc.
T148FFSG
7¼" | 18.4 cm | 1 doz



Dinner Knife, H.H.
T148KPSG
9¾" | 24.8 cm | 1 doz



Table Knife, 1-Pc.
T148KDVF
9¾" | 24.8 cm | 1 doz



Dessert Knife, H.H.
T148KPSF
8½" | 21.6 cm | 1 doz



Butter Knife, H.H.
T148KBBF
6¾" | 17.1 cm | 1 doz



Dessert Knife, 1-Pc.
T148KDVG
8" | 21.6 cm | 1 doz



Steak Knife, H.H.
T148KSHF
8¾" | 22.2 cm | 1 doz



Butter Spreader, F.H.
T148KSBF
6½" | 16.5 cm | 1 doz



Fish Knife, 1-Pc.
T148KF5F
8" | 21.0 cm | 1 doz

H.H. = Hollow Handle | F.H. = Flat Handle
Prefix "V" is silverplate (special order) | Prefix "T" is stainless



Lido™

18/10 Stainless Steel (T246) & Silverplate (V246)

A pair of incised lines echo the perimeter of this luxurious design. The lustrous notched handle brings a contemporary, European flair to your fine dining establishment.

- 18/10 stainless steel
- Continental sizing
- American and European décors



Teaspoon, US Size
T246STS
6 3/8" | 16.2 cm | 1 doz



Teaspoon, European Size
T246SFTF
5 1/2" | 14.0 cm | 1 doz



Oval Bowl Soup/Dessert Spoon
T246SDEF
7 1/4" | 18.4 cm | 1 doz



Bouillon Spoon
T246SBLF
6" | 15.2 cm | 1 doz



Iced Tea Spoon
T246SITF
7 1/2" | 19.1 cm | 1 doz



A.D. Coffee Spoon
T246SADF
4 3/8" | 11.7 cm | 1 doz



Tablespoon/Serving Spoon
T246STBF
8 1/2" | 21.6 cm | 1 doz



Dinner Fork
T246FDNF
7 1/4" | 18.4 cm | 1 doz



Table Fork, European Size
T246FDIF
8" | 20.3 cm | 1 doz



Salad/Pastry Fork
T246FSLF
6 1/4" | 15.9 cm | 1 doz



Oyster/Cocktail Fork
T246FOYF
5 1/2" | 14.0 cm | 1 doz



Dinner Knife, 1-Pc.
T246KPVF
8 3/4" | 22.2 cm | 1 doz



Table Knife, 1-Pc.
T246KDVF
9 3/8" | 23.8 cm | 1 doz



Steak Knife, 1-Pc.
T246KSSF
9 1/4" | 23.5 cm | 1 doz



Butter Knife, 1-Pc.
T246KSBG
8" | 20.3 cm | 1 doz



Butter Spreader, F.H.
T246KSBF
6 7/8" | 17.5 cm | 1 doz





New Rim™

18/10 Stainless Steel (T015) & Silverplate (V015)

A gently curving border reflects the simple elegance of this fine pattern. A beautiful complement for virtually any tabletop, New Rim blends continental sizing with European styling and an impressive array of pieces to create a distinctive and unique place setting.

- 18/10 stainless steel
- Continental sizing
- American and European décors
- Recommended for use in the healthcare industry



Teaspoon, US Size
T015STS
6¼" | 15.9 cm | 1 doz



Teaspoon, European Size
T015SFTF
5¾" | 13.7 cm | 1 doz



Oval Bowl Soup/Dessert Spoon
T015SDEF
7¼" | 18.4 cm | 1 doz



Bouillon Spoon
T015SBLF
6" | 15.2 cm | 1 doz



Round Bowl Soup Spoon
T015SRBF
6⅞" | 17.5 cm | 1 doz



Iced Tea Spoon
T015SITF
7" | 17.8 cm | 1 doz



A.D. Coffee Spoon
T015SADF
4½" | 11.4 cm | 1 doz



Tablespoon/Serving Spoon
T015STBF
8" | 20.3 cm | 1 doz



Dinner Fork
T015FDEF
7¼" | 18.4 cm | 1 doz



Table Fork, European Size
T015FDIF
8" | 20.3 cm | 1 doz



Salad/Pastry Fork
T015FSLF
6½" | 16.5 cm | 1 doz



Oyster/Cocktail Fork
T015FOYF
5¾" | 14.6 cm | 1 doz



Escargot Fork
T015FESF
6" | 15.2 cm | 1 doz



Fish Fork, 1-Pc.
T015FFSF
7⅞" | 18.1 cm | 1 doz



Table Knife, 1-Pc.
T015KDVF
9" | 22.9 cm | 1 doz



Dessert Knife, 1-Pc.
T015KDEF
8¼" | 21.0 cm | 1 doz



Steak Knife, 1-Pc.
T015KSSF
9¼" | 23.5 cm | 1 doz



Butter Knife, 1-Pc.
T015KSBG
7⅞" | 18.1 cm | 1 doz



Butter Spreader, F.H.
T015KSBF
6⅝" | 16.8 cm | 1 doz



Fish Knife, 1-Pc.
T015KFSF
8⅞" | 20.6 cm | 1 doz

F.H. = Flat Handle

Prefix "V" is silverplate (special order) | Prefix "T" is stainless

18/10 Stainless & Silverplate





New York™

18/10 Stainless Steel (T131) & Silverplate (V131)

This richly sculpted, plume-like design is finely crafted. New York is bound to be noticed and appreciated by your patrons for its beautiful finish and exceptional quality.

- 18/10 stainless steel
- Continental sizing
- American and European décors
- Recommended for use in the healthcare industry



Teaspoon, US Size
T131STSF
6½" | 15.9 cm | 1 doz



Oval Bowl Soup/Dessert Spoon
T131SDEF
7¼" | 18.4 cm | 1 doz



Bouillon Spoon
T131SBLF
6½" | 15.6 cm | 1 doz



Iced Tea Spoon
T131SITF
7½" | 19.1 cm | 1 doz



A.D. Coffee Spoon
T131SADF
4½" | 11.4 cm | 1 doz



Tablespoon/Serving Spoon
T131STBF
8½" | 21.3 cm | 1 doz



Dinner Fork
T131FDNF
7½" | 19.1 cm | 1 doz



Table Fork, European Size
T131FDIF
8" | 20.3 cm | 1 doz



Salad/Pastry Fork
T131FSLF
6½" | 16.8 cm | 1 doz



Oyster/Cocktail Fork
T131FOYF
5½" | 14.3 cm | 1 doz



Dinner Knife, H.H.
T131KPSF
9¼" | 23.5 cm | 1 doz



Table Knife, 1-Pc.
T131KDVF
9¾" | 23.8 cm | 1 doz



Steak Knife, 1-Pc.
T131KSSF
9¼" | 23.5 cm | 1 doz



Butter Knife, 1-Pc.
T131KSBBG
7" | 17.8 cm | 1 doz



Butter Spreader, F.H.
T131KSBBF
6½" | 16.5 cm | 1 doz

H.H. = Hollow Handle | F.H. = Flat Handle
Prefix "V" is silverplate (special order) | Prefix "T" is stainless



Pearl™

18/10 Stainless Steel (T163) & Silverplate (V163)

A strand of graduated beads embellishes the border of Pearl. This refined flatware offers continental sizing and unequalled durability, making it suitable in both American and European décors.

- 18/10 stainless steel
- Continental sizing
- American and European décors
- Recommended for use in the healthcare industry



Teaspoon, US Size
T163STSF
6¼" | 15.9 cm | 1 doz



Oval Bowl Soup/Dessert Spoon
T163SDEF
7⅞" | 18.7 cm | 1 doz



Bouillon Spoon
T163SBLF
6" | 15.2 cm | 1 doz



Iced Tea Spoon
T163SITF
7" | 17.8 cm | 1 doz



A.D. Coffee Spoon
T163SADF
4½" | 11.4 cm | 1 doz



Tablespoon/Serving Spoon
T163STBF
8" | 20.3 cm | 1 doz



Dinner Fork
T163FDEF
7¼" | 18.4 cm | 1 doz



Table Fork, European Size
T163FDIF
8¼" | 21.0 cm | 1 doz



Salad/Pastry Fork
T163FSLF
6½" | 16.5 cm | 1 doz



Oyster/Cocktail Fork
T163FOYF
5¾" | 14.6 cm | 1 doz



Table Knife, 1-Pc.
T163KDVF
9" | 22.9 cm | 1 doz



Steak Knife, 1-Pc.
T163KSSF
9¼" | 23.5 cm | 1 doz



Butter Knife, 1-Pc.
T163KSBG
7¼" | 18.4 cm | 1 doz



Butter Spreader, F.H.
T163KSBF
6¾" | 17.1 cm | 1 doz





Perimeter™

18/10 Stainless Steel (T936) & Silverplate (V936)

Perimeter's seamless, beveled handles and balanced contoured design bring an edge to Oneida's Fine Dining 18/10 stainless collection. This pattern's modern design and superb, lustrous finish will raise eyebrows and expectations at any establishment. Pair this exciting pattern with banded or plain dinnerware to make a true statement.

- 18/10 stainless steel
- Superb finish
- Long lasting durability



Teaspoon, European Size

T936SFTF
6" | 15.2 cm | 1 doz



Teaspoon, US Size

T936STSF
6 3/8" | 16.2 cm | 1 doz



Oval Bowl Soup/Dessert Spoon

T936SDEF
7 1/4" | 18.4 cm | 1 doz



Round Bowl Soup Spoon

T936SRBF
7" | 17.8 cm | 1 doz



Iced Tea Spoon

T936SITF
7 1/2" | 19.1 cm | 1 doz



A.D. Coffee Spoon

T936SADF
4 1/4" | 10.8 cm | 1 doz



Tablespoon/Serving Spoon

T936STBF
8 3/8" | 21.3 cm | 1 doz



Dinner Fork

T936FDNF
7 3/4" | 19.7 cm | 1 doz



Table Fork, European Size

T936FDIF
8" | 20.3 cm | 1 doz



Dessert/Salad Fork

T936FDEF
7 1/4" | 18.4 cm | 1 doz



Oyster/Cocktail Fork

T936FOYF
5 1/2" | 14.0 cm | 1 doz



Fish Fork

T936FFSF
7 1/4" | 18.4 cm | 1 doz



Dinner Knife, 1-Pc.

T936KDTF
9 1/2" | 24.1 cm | 1 doz



Dessert Knife, 1-Pc.

T936KDEF
8 3/8" | 21.3 cm | 1 doz



Steak Knife, 1-Pc.

T936KSSF
9 1/2" | 24.1 cm | 1 doz



Butter Knife, 1-Pc.

T936KBVF
7" | 17.8 cm | 1 doz



Fish Knife, 1-Pc.

T936KFSS
7 1/2" | 19.1 cm | 1 doz





Saumur™

18/10 Stainless Steel (T010) & Silverplate (V010)

Saumur has a simple, yet distinctive look that complements any fine dining table setting. A pair of incised lines echo the paddle-shaped handle to create an understated, yet luxurious, pattern.

- 18/10 stainless steel
- Continental sizing
- American and European décors
- Recommended for use in the healthcare industry



Teaspoon, European Size

T010SFTF
5½" | 14.0 cm | 1 doz



Oval Bowl Soup/Dessert Spoon

T010SDEG
7¼" | 18.4 cm | 1 doz



Round Bowl Soup Spoon

T010SBLF
6¼" | 15.9 cm | 1 doz



Iced Tea Spoon

T010SITF
7" | 17.8 cm | 1 doz



A.D. Coffee Spoon

T010SADF
4" | 10.2 cm | 1 doz



Tablespoon/Serving Spoon

T010STBF
8¼" | 21.0 cm | 1 doz



Dinner Fork

T010FDEF
7¼" | 18.4 cm | 1 doz



Table Fork, European Size

T010FDIF
8½" | 21.6 cm | 1 doz



Salad/Pastry Fork

T010FSLF
6⅝" | 16.8 cm | 1 doz



Oyster/Cocktail Fork

T010FOYF
5¼" | 13.3 cm | 1 doz



Table Knife, 1-Pc.

T010KDVF
9¾" | 24.8 cm | 1 doz



Dessert Knife, 1-Pc.

T010KDEF
8" | 20.3 cm | 1 doz



Butter Knife, 1-Pc.

T010KSBG
7" | 17.8 cm | 1 doz



Apex™

18/10 Stainless Steel (T483)

Apex is the supermodel of stainless. Slender, elongated tines and bowls balance the ultra-tapered handle in this flatware design. Your patrons will love its clean, sleek feel and uncomplicated good looks.

- 18/10 stainless steel
- Continental sizing
- American and European décors



Teaspoon, European Size

T483SFTF
6" | 15.2 cm | 1 doz



Teaspoon, US Size

T483STSF
7" | 17.8 cm | 1 doz



Oval Bowl Soup/Dessert Spoon

T483SDEF
8" | 20.3 cm | 1 doz



Round Bowl Soup Spoon

T483SRBF
7" | 17.8 cm | 1 doz



Iced Tea Spoon

T483SITF
7½" | 19.1 cm | 1 doz



A.D. Coffee Spoon

T483SADF
4½" | 11.4 cm | 1 doz



Tablespoon/Serving Spoon

T483STBF
9" | 22.9 cm | 1 doz



Table Fork, European Size

T483FEUF
8½" | 21.6 cm | 1 doz



Dessert/Salad Fork

T483FDEF
7¾" | 19.7 cm | 1 doz



Salad/Pastry Fork

T483FSLF
7" | 17.8 cm | 1 doz



Fish Fork

T483FFSF
7½" | 18.1 cm | 1 doz



Dinner Knife, 1-Pc.

T483KPTF
9½" | 24.1 cm | 1 doz



Steak Knife, 1-Pc.

T483KSSF
9½" | 24.1 cm | 1 doz



Butter Knife, 1-Pc.

T483KSBG
7" | 17.8 cm | 1 doz



Fish Knife, 1-Pc. (Bent Handle)

T483KFSS
7½" | 20.0 cm | 1 doz



Pierced Serving Spoon

T483SPTF
9½" | 23.2 cm | 1 doz



Serving/Cold Meat Fork

T483FCMF
9" | 22.9 cm | 1 doz

Petite Items: Recommended for child flatware and use in the airline and healthcare industries.



Bouillon/Petite Spoon

T483SBLF
6¾" | 16.2 cm | 1 doz



Petite Knife, 1-Pc.

T483KPKF
7¾" | 19.7 cm | 1 doz



Oyster/Cocktail/Petite Fork

T483FOYF
6¼" | 15.9 cm | 1 doz





Arbor Rose™

18/10 Stainless Steel (2552)

Smooth flowing scrolls accented with a prominent rose bud create a warm, traditional design in quality stainless. Pair this pretty flatware pattern with floral themed dinnerware or simple white tableware.

- 18/10 stainless steel
- Superb finish and pattern detail
- Long lasting durability
- Recommended for use in the healthcare industry



Teaspoon
2552STSF
6" | 15.2 cm | 3 doz



Oval Bowl Soup/Dessert Spoon
2552SPLF
6 7/8" | 17.5 cm | 3 doz



Bouillon Spoon
2552SBLF
6" | 15.2 cm | 3 doz



Iced Tea Spoon
2552SITF
7 1/2" | 19.1 cm | 3 doz



Tablespoon/Serving Spoon
2552STBF
8 1/4" | 21.0 cm | 1 doz



Dinner Fork
2552FRSF
7 1/4" | 18.4 cm | 3 doz



Salad/Pastry Fork
2552FSLF
6 1/4" | 15.9 cm | 3 doz



Oyster/Cocktail Fork
2552FOYF
6 1/8" | 15.6 cm | 3 doz



Dinner Knife, 1-Pc.
2552KPVF
8 1/4" | 21.0 cm | 3 doz

18/10 Stainless Steel





Astragal™

18/10 Stainless Steel (T119)

Elaborately crafted and finished in fine stainless, Astragal features prominent architectural bands encircling its teardrop-shaped handle. This distinctive design element is repeated again at the shank, bringing a tailored look to your tabletop. Pair this versatile flatware with banded or plain dinnerware.

- 18/10 stainless steel
- Long lasting durability
- Recommended for use in the healthcare industry



Teaspoon, US Size
T119STSF
6" | 15.2 cm | 1 doz



Oval Bowl Soup/Dessert Spoon
T119SDEF
6¾" | 17.1 cm | 1 doz



Round Bowl Soup Spoon
T119SRBF
6¾" | 17.1 cm | 1 doz



Iced Tea Spoon
T119SITF
7½" | 19.1 cm | 1 doz



A.D. Coffee Spoon
T119SADF
4¾" | 11.1 cm | 1 doz



Tablespoon/Serving Spoon
T119STBF
8¾" | 21.0 cm | 1 doz



Dinner Fork
T119FDNF
7½" | 19.1 cm | 1 doz



Table Fork, European Size
T119FDIF
8" | 20.3 cm | 1 doz



Salad/Pastry Fork
T119FSLF
6¾" | 17.1 cm | 1 doz



Dessert Fork
T119FDEF
6¾" | 17.1 cm | 1 doz



Oyster/Cocktail Fork
T119FOYF
6¼" | 15.9 cm | 1 doz



Table Knife, 1-Pc.
T119KPTF
9¾" | 23.8 cm | 1 doz



Steak Knife, 1-Pc.
T119KSSF
9½" | 24.1 cm | 1 doz



Butter Spreader, 1-Pc.
T119KSBF
6¾" | 16.8 cm | 1 doz



Cabria™

18/10 Stainless Steel (T958)

A Textured Trendsetter. This distinctive pattern features modern silhouette and contour with a bright textured marteled finish. Each piece has the charm of a hand-hammered surface. Cabria's forks and spoons have a gentle length curvature through the handle, making this pattern a pleasure to hold. This pattern will add a textural and distinct design to your contemporary table.

- High quality 18/10 stainless steel
- Mirror finish with subtle marteled texture
- Fine Dining



Teaspoon
T958STSF
6¼" | 15.9 cm | 1 doz



Dessert/Oval Bowl Soup Spoon
T958SDEF
7" | 17.8 cm | 1 doz



Bouillon Spoon
T958SBLF
6½" | 15.6 cm | 1 doz



Iced Teaspoon
T958SITF
7¾" | 18.7 cm | 1 doz



A.D. Coffee Spoon
T958SADF
4¾" | 11.1 cm | 1 doz



Serving Spoon
T958STBF
8¾" | 21.3 cm | 1 doz



Dinner Fork
T958FDNF
7½" | 20.0 cm | 1 doz



Table Fork, European Size
T958FDIF
8¼" | 21.0 cm | 1 doz



Dessert/Salad Fork
T958FDEF
7" | 17.8 cm | 1 doz



Cold Meat Fork
T958FCMF
8½" | 21.6 cm | 1 doz



Oyster/Cocktail Fork
T958FOYF
5¾" | 13.7 cm | 1 doz



Dinner Knife, 1-pc.
T958KDTF
9½" | 24.1 cm | 1 doz



Dessert Knife
T958KDAF
8¾" | 21.9 cm | 1 doz



SH Steak Knife, 1-pc.
T958KSSF
9½" | 24.1 cm | 1 doz



Butter Knife, 1-pc.
T958KBVF
7" | 17.8 cm | 1 doz



Chateau™

18/8 Stainless Steel (2610)

This timeless pattern boasts a traditional fiddleback shape accented by intricate scrolls, finely detailed flowers and a highly polished finish. Chateau flatware is well suited to complement decorative or plain dinnerware designs.

- 18/8 stainless steel
- Superb finish and pattern detail
- Long lasting durability
- Recommended for use in the healthcare industry



Teaspoon
2610STSF
6" | 15.2 cm | 3 doz



Oval Bowl Soup/Dessert Spoon
2610SPLF
6¾" | 17.1 cm | 3 doz



Bouillon Spoon
2610SBLF
5¾" | 14.6 cm | 3 doz



Iced Tea Spoon
2610SITF
7½" | 19.1 cm | 3 doz



Tablespoon/Serving Spoon
2610STBF
8¾" | 21.0 cm | 1 doz



Dinner Fork
2610FRSF
7¼" | 18.4 cm | 3 doz



Salad/Pastry Fork
2610FSLF
6¼" | 15.9 cm | 3 doz



Oyster/Cocktail Fork
2610FOYF
6⅝" | 15.6 cm | 3 doz



Dinner Knife, 1-Pc.
2610KPVF
8¼" | 21.0 cm | 3 doz



Butter Knife, F.H.
2610KBFF
6¼" | 15.9 cm | 1 doz



Butter Spreader, F.H.
2610KSBF
6⅜" | 16.2 cm | 1 doz

Child Items:



Child Teaspoon
2610SFTF
5¼" | 13.3 cm | 3 doz



Child Fork
2610FCHF
5¾" | 14.6 cm | 3 doz



Child Knife
2610KCVF
6¾" | 17.1 cm | 3 doz



Cheviot™

18/10 Stainless Steel (T389)

This modern pattern offers a distinctive, architectural inspired design. It features a highly textured handle that brings a creative, trendsetting, yet dramatic presence to any table setting.

- 18/10 stainless steel
- Superb finish and pattern detail
- Long lasting durability



Teaspoon, European Size
T389SFTF
5 7/8" | 14.3 cm | 1 doz



Teaspoon
T389STSF
6 1/4" | 15.9 cm | 1 doz



Oval Bowl Soup/Dessert Spoon
T389SDEF
7 3/8" | 18.7 cm | 1 doz



Bouillon Spoon
T389SBLF
6" | 15.2 cm | 1 doz



Round Bowl Soup Spoon
T389SRBF
7" | 17.8 cm | 1 doz



Iced Tea Spoon
T389SITF
7 1/4" | 18.4 cm | 1 doz



A.D. Coffee Spoon
T389SADF
4 7/8" | 12.4 cm | 1 doz



Tablespoon/Serving Spoon
T389STBS
8 3/8" | 21.3 cm | 1 doz



Dinner Fork
T389FDNF
8 1/4" | 21.0 cm | 1 doz



Table Fork, European Size
T389FDIF
8 1/2" | 21.6 cm | 1 doz



Salad/Pastry Fork
T389FDEF
7 1/2" | 19.1 cm | 1 doz



Oyster/Cocktail Fork
T389FOYF
5 5/8" | 14.3 cm | 1 doz



Table Knife
T389KDTF
9 1/2" | 24.1 cm | 1 doz



Butter Knife
T389KBVF
6 3/8" | 17.5 cm | 1 doz



Dessert Knife
T389KDAF
8 3/4" | 22.2 cm | 1 doz



Steak Knife
T389KSSF
9 1/2" | 24.1 cm | 1 doz

18/10 Stainless Steel





Cityscape™

18/10 Stainless Steel (2507)

This innovative design offers an intriguing symmetry of tiers and curving lines. Its lustrous appearance and unique handle make this stainless pattern an Oneida favorite.

- 18/10 stainless steel
- Superb finish and pattern detail
- Long lasting durability
- Authentic Art Deco handle motif



Teaspoon
2507STSF
6" | 15.2 cm | 3 doz



Oval Bowl Soup/Dessert Spoon
2507SDEF
7¼" | 18.4 cm | 3 doz



Bouillon Spoon
2507SBLF
6" | 15.2 cm | 3 doz



Round Bowl Soup Spoon
2507SRBF
6¾" | 17.1 cm | 3 doz



Iced Tea Spoon
2507SITF
7¼" | 18.4 cm | 3 doz



A.D. Coffee Spoon
2507SADF
4¼" | 10.8 cm | 3 doz



Tablespoon/Serving Spoon
2507STBF
8½" | 21.6 cm | 1 doz



Dinner Fork
2507FDNF
7¾" | 19.7 cm | 3 doz



Table Fork, European Size
2507FEUF
8" | 20.3 cm | 3 doz



Salad/Pastry Fork
2507FSLF
7" | 17.8 cm | 3 doz



Oyster/Cocktail Fork
2507FOYF
6⅞" | 15.6 cm | 3 doz



Dinner Knife, 1-Pc.
2507KPVF
9" | 22.9 cm | 3 doz



Butter Knife, 1-Pc.
2507KBVF
6¾" | 17.1 cm | 3 doz



Butter Spreader, 1-Pc.
2507KSBF
6½" | 16.5 cm | 1 doz

18/10 Stainless Steel





Classic Shell™

18/10 Stainless Steel (2496)

This prestigious stainless fiddleback pattern is adorned with a stylized shell motif. Inspired by the timeless beauty of the sea, Classic Shell is an exquisite formal colonial shell design sculpted for lasting appeal.

- 18/10 stainless steel
- Superb finish and pattern detail
- Long lasting durability



Teaspoon
2496STSF
6" | 15.2 cm | 3 doz



Oval Bowl Soup/Dessert Spoon
2496SPLF
6¾" | 17.1 cm | 3 doz



Bouillon Spoon
2496SBLF
5" | 14.9 cm | 3 doz



Iced Tea Spoon
2496SITF
7½" | 19.1 cm | 3 doz



A.D. Coffee Spoon
2496SADF
4½" | 11.4 cm | 3 doz



Tablespoon/Serving Spoon
2496STBF
8¼" | 21.0 cm | 1 doz



Dinner Fork
2496FDNF
7⅝" | 19.4 cm | 3 doz



Salad/Pastry Fork
2496FSLF
6¾" | 17.1 cm | 3 doz



Oyster/Cocktail Fork
2496FOYF
5⅝" | 14.9 cm | 3 doz



Dinner Knife, 1-Pc.
2496KPTF
9¼" | 23.5 cm | 1 doz



Butter Spreader, 1-Pc.
2496KSBF
6¾" | 17.1 cm | 1 doz

18/10 Stainless Steel





Cooper™

18/10 Stainless Steel (T416)

Inspired by the farm-to-table trend, Cooper features an open hole handle and brushed finish. The clever design that resembles classic riveted cookware will complement any casual table setting.

- Finest quality 18/10 stainless steel
- Brushed finish



Teaspoon
T416STSF
6 7/8" | 17.5 cm | 1 doz



Oval Bowl Soup/Dessert Spoon
T416SDEF
7 7/8" | 20.0 cm | 1 doz



Bouillon Spoon
T416SBLF
6 7/8" | 17.5 cm | 1 doz



Iced Tea Spoon
T416SITF
7 7/8" | 19.4 cm | 1 doz



A.D. Coffee Spoon
T416SADF
4 1/2" | 11.4 cm | 1 doz



Dinner Fork
T416FDNF
8 7/8" | 20.6 cm | 1 doz



Dessert/Salad Fork
T416FDEF
7 7/8" | 18.1 cm | 1 doz



Oyster/Cocktail Fork
T416FOYF
5 3/4" | 14.6 cm | 1 doz



Dinner Knife
T416KDTF
9 1/4" | 23.5 cm | 1 doz



Steak Knife
T416KSSF
9 3/4" | 24.8 cm | 1 doz



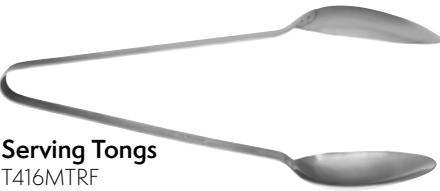
Banquet Spoon
T416SBNF
13" | 33.0 cm | 1 doz



Banquet Fork
T416FBNF
13" | 33.0 cm | 1 doz



Soup Ladle
T416MSPF
13" | 33.0 cm | 1 doz



Serving Tongs
T416MTRF
13" | 33.0 cm | 1 doz



ONIDA
CUTLERY



Deauville™

18/10 Stainless Steel (T433)

What is old is new again. ... leveraging the Art Deco trend, this vintage Oneida pattern is enhanced with black oxidized geometric patterns on the tip of the handle.

- 18/10 stainless steel
- Superb finish and pattern detail
- Long lasting durability



Teaspoon
T433STSF
6 3/8" | 16.2 cm | 1 doz



Dinner Spoon
T433SDEF
7" | 17.8 cm | 1 doz



Bouillon Spoon
T433SBLF
6 3/8" | 16.2 cm | 1 doz



Iced Tea Spoon
T433SITF
7 7/8" | 19.4 cm | 1 doz



A.D. Coffee Spoon
T433SADF
4 1/2" | 11.4 cm | 1 doz



Dinner Fork
T433FDNF
8" | 20.3 cm | 1 doz



Salad/Dessert Fork
T433FSLF
7 7/8" | 18.1 cm | 1 doz



Oyster/Cocktail Fork
T433FOYF
5 7/8" | 14.9 cm | 1 doz



Dinner Knife (SH)
T433KDTF
9 1/2" | 24.1 cm | 1 doz



Steak Knife (SH)
T433KSsF
9 1/2" | 24.1 cm | 1 doz





Flight™

18/8 Stainless Steel (2865)

You can see why Flight is one of Oneida's most popular flatware patterns of all time. Its attractive, reflective body is accented by a subtle stylized line, offering timeless design appeal that blends with any decor.

- 18/8 stainless steel
- Superb finish and pattern detail
- Long lasting durability
- Recommended for use in the healthcare industry



Teaspoon
2865STSF
6" | 15.2 cm | 3 doz



Oval Bowl Soup/Dessert Spoon
2865SPLF
6¾" | 17.1 cm | 3 doz



Bouillon Spoon
2865SBLF
5⅞" | 14.9 cm | 3 doz



Tablespoon/Serving Spoon
2865STBF
8⅞" | 21.3 cm | 1 doz



Dinner Fork
2865FRSF
7⅞" | 18.7 cm | 3 doz



Salad/Pastry Fork
2865FSLF
6¾" | 17.1 cm | 3 doz



Dinner Knife, 1-Pc.
2865KPVF
9" | 22.9 cm | 3 doz





Inn Classic™

18/10 Stainless Steel (2305)*

The fluted border and beveled end of Inn Classic brings a simple beauty to your tabletop. This 18/10 stainless steel flatware goes with virtually any dinnerware. This popular design offers an impressive array of pieces including a one-piece steak knife.

- 18/10 stainless steel
- Long lasting durability



Teaspoon
2305STSF
6" | 15.2 cm | 3 doz



Tablespoon
2305STBF
8 1/4" | 20.6 cm | 1 doz



Oval Bowl Soup/Dessert Spoon
2305SDEF
7 1/4" | 18.4 cm | 3 doz



Bouillon Spoon
2305SBLF
6" | 15.2 cm | 3 doz



Iced Tea Spoon
2305SITF
7 1/4" | 18.4 cm | 3 doz



A.D. Coffee Spoon
2305SADF
4" | 10.2 cm | 3 doz



Dinner Fork
2305FDNF
7 1/4" | 18.4 cm | 3 doz



Table Fork, European Size
2305FDLF
8 1/2" | 21.6 cm | 3 doz



Salad/Pastry Fork
2305FSLF
6 1/2" | 16.8 cm | 3 doz



Meat Fork
2305FCMF
8 3/8" | 21.9 cm | 1 doz



Oyster/Cocktail Fork
2305FOYF
6" | 15.2 cm | 3 doz



Dinner Knife, 1-Pc. Hvy.
2305KDVG
10" | 25.4 cm | 3 doz



Steak Knife, 1-Pc.
2305KSSF
9 1/2" | 24.1 cm | 3 doz



Butter Spreader, 1-Pc.
2305KSBG
7" | 17.8 cm | 3 doz

*See Eaton (1305) for silverplated version.



Ivy Flourish™

18/10 Stainless Steel (T638)

Decorative, paisley inspired flatware that features a high polished finish, detailed with scrollwork enhanced with oxidized incised lines to elevate the beauty of each handle.

- 18/10 stainless steel
- Superb finish and pattern detail
- Long lasting durability



Teaspoon
T638STSF
5½" | 14.7 cm | 1 doz



Teaspoon, European Size
T638SFTF
6¾" | 16.0 cm | 1 doz



Tablespoon/Serving Spoon
T638STBF
8½" | 21.1 cm | 1 doz



Oval Bowl Soup/Dessert Spoon
T638SDEF
7½" | 18.1 cm | 1 doz



Bouillon Spoon
T638SBLF
6¾" | 15.5 cm | 1 doz



Iced Tea Spoon
T638SITF
7½" | 18.8 cm | 1 doz



A.D. Coffee Spoon
T638SADF
4½" | 11.2 cm | 1 doz



Dinner Fork
T638FDNF
8" | 20.2 cm | 1 doz



Table Fork, European Size
T638FDIF
8½" | 21.1 cm | 1 doz



Salad/Pastry Fork
T638FDEF
7½" | 18.1 cm | 1 doz



Oyster/Cocktail Fork
T638FOYF
5½" | 14.2 cm | 1 doz



Table Knife
T638KDTF
9½" | 24.0 cm | 1 doz



Steak Knife
T638KSSF
9½" | 24.1 cm | 1 doz



Dessert Knife
T638KDAF
8¼" | 21.0 cm | 1 doz



Butter Knife
T638KBVF
7" | 17.8 cm | 1 doz

18/10 Stainless Steel

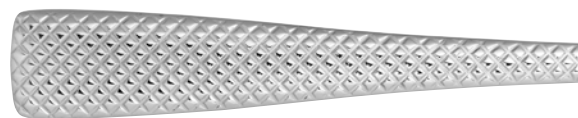


Jade™

18/10 Stainless Steel (T057)

A distinctive design. Jade is modern flatware diamond inspired design with a highly textured handle that brings the element of jewelry to any table.

- Finest quality 18/10 stainless steel
- Superb finish and pattern detail



Teaspoon
T057STSF
6¼" | 15.9 cm | 1 doz



Teaspoon, European Size
T057SFTF
5½" | 14.0 cm | 1 doz



Dessert/Oval Bowl Soup Spoon
T057SDEF
7" | 17.8 cm | 1 doz



Round Bowl/Soup Spoon
T057SRBF
6¾" | 17.1 cm | 1 doz



Iced Tea Spoon
T057SITF
7⅝" | 18.7 cm | 1 doz



A.D. Coffee Spoon
T057SADF
4½" | 11.4 cm | 1 doz



Serving Spoon
T057STBF
8½" | 21.6 cm | 1 doz



Dinner Fork
T057FDNF
7⅞" | 20.0 cm | 1 doz



Dessert/Salad Fork
T057FDEF
7" | 17.8 cm | 1 doz



Oyster/Cocktail Fork
T057FOYF
5" | 12.7 cm | 1 doz



Serving Fork
T057FDIF
8½" | 21.6 cm | 1 doz



Dinner Knife, 1-pc.
T057KPTF
9½" | 24.1 cm | 1 doz



Dessert Knife
T057KDEF
8⅝" | 21.9 cm | 1 doz



Steak Knife
T057KSSF
9½" | 24.1 cm | 1 doz



Butter Knife
T057KBVF
7" | 17.8 cm | 1 doz



Juilliard™

18/10 Stainless Steel (2273)

A traditional pattern with modern appeal, Juilliard features a sculptured fleur-de-lis and a gracefully stylized handle. This durable stainless provides maximum protection, which makes it one of the finest and most popular Oneida designs.

- 18/10 stainless steel
- Superb finish and pattern detail
- Long lasting durability



Teaspoon
2273STSF
6 1/8" | 15.6 cm | 3 doz



Oval Bowl Soup/Dessert Spoon
2273SDEF
7 1/4" | 18.4 cm | 3 doz



Bouillon Spoon
2273SBLF
6" | 15.2 cm | 3 doz



Round Bowl Soup Spoon
2273SRBF
6 3/4" | 17.1 cm | 3 doz



Iced Tea Spoon
2273SITF
7 1/4" | 18.4 cm | 3 doz



A.D. Coffee Spoon
2273SADF
4 1/4" | 10.8 cm | 3 doz



Tablespoon/Serving Spoon
2273STBF
8 3/4" | 21.0 cm | 1 doz



Dinner Fork
2273FEUF
8" | 20.3 cm | 3 doz



Table Fork, European Size
2273FDLF
8 1/2" | 21.6 cm | 3 doz



Salad/Pastry Fork
2273FSLF
7" | 17.8 cm | 3 doz



Oyster/Cocktail Fork
2273FOYF
6" | 15.2 cm | 3 doz



Dinner Knife, H.H.
2273KDSF
9 1/2" | 24.1 cm | 1 doz



Dinner Knife, 1-Pc.
2273KPVF
9" | 22.9 cm | 3 doz



Steak Knife, H.H.
2273KSHF
9 3/8" | 23.8 cm | 1 doz



Butter Knife, 1-Pc.
2273KBVF
6 3/4" | 17.1 cm | 1 doz



Butter Spreader, 1-Pc.
2273KSBF
6 1/2" | 16.5 cm | 1 doz





Lexia™

18/10 Stainless Steel (B576)

Lexia features contemporary curves enhanced by the Oneida Relic™ finish. The trademark finish provides a weathered and organic look that provides a sophisticated appeal to this heavy weight pattern.

- 18/0 stainless steel
- Heavy gauge
- Features Oneida Relic™ finish



Teaspoon
B576STSF
6 3/8" | 16.2 cm | 1 doz



Oval Bowl Soup/Dessert Spoon
B576SDEF
7 1/4" | 18.4 cm | 1 doz



Bouillon Spoon
B576SBLF
6 1/4" | 15.9 cm | 1 doz



Iced Teaspoon
B576SITF
7 3/8" | 18.7 cm | 1 doz



A.D. Coffee Spoon
B576SADF
4 5/8" | 11.7 cm | 1 doz



Table/Serving Spoon
B576STBF
8 1/2" | 21.6 cm | 1 doz



Dinner Fork
B576FDNF
8 1/4" | 21.0 cm | 1 doz



Dessert/Salad Fork
B576FDEF
7 3/8" | 18.7 cm | 1 doz



Oyster/Cocktail Fork
B576FOYF
5 5/8" | 14.3 cm | 1 doz



Table Knife
B576KDTF
9 3/8" | 23.8 cm | 1 doz



Steak Knife
B576KSSF
9 3/8" | 23.8 cm | 1 doz



Dessert Knife
B576KDAF
8 1/4" | 21.0 cm | 1 doz



Butter Knife
B576KBVF
7" | 17.8 cm | 1 doz

18/10 Stainless Steel





Libra™

18/10 Stainless Steel (T922)

The pattern of Libra is a statement itself. This substantial, contemporary pattern also possesses a hint of whimsy that will liven up any tabletop.

- 18/10 stainless steel
- High polish and bright finish
- Heavy gauge



Teaspoon, European Size
T922SFTF
5¼" | 13.3 cm | 3 doz



Teaspoon
T922STSF
5⅞" | 14.9 cm | 3 doz



Oval Bowl Soup Spoon
T922SDEF
7" | 17.8 cm | 3 doz



Round Bowl Soup Spoon
T922SRBF
6⅞" | 17.5 cm | 3 doz



Iced Tea Spoon
T922SITF
7⅞" | 18.7 cm | 3 doz



A.D. Coffee Spoon
T922SADF
4½" | 11.4 cm | 3 doz



Tablespoon/Serving Spoon
T922STBF
8⅞" | 21.9 cm | 1 doz



Dinner Fork
T922FDNF
8⅞" | 21.3 cm | 3 doz



Dessert/Salad Fork
T922FDEF
7¼" | 18.4 cm | 3 doz



Oyster/Cocktail Fork
T922FOYF
6" | 15.2 cm | 3 doz



Fish Fork
T922FFSF
7½" | 19.1 cm | 3 doz



Dinner Knife, 1-Pc.
T922KDTF
9½" | 24.1 cm | 1 doz



Dessert Knife, 1-Pc.
T922KDEF
8½" | 21.6 cm | 1 doz



Steak Knife, 1-Pc.
T922KSSF
9½" | 24.1 cm | 1 doz



Butter Knife, 1-Pc.
T922KBVF
7" | 17.8 cm | 1 doz



Fish Knife, 1-Pc. (Bent Handle)
T922KFSF
8" | 20.3 cm | 3 doz

18/10 Stainless Steel





Lonsdale™

18/8 Stainless Steel (B740)

A smooth tapered handle with a softly rounded tip creates a contemporary pattern that works well in a variety of presentations. Extremely resistant to corrosion and chemical damage, this casual flatware is also refined and attractive.

- 18/8 stainless steel
- Quality finish
- Outstanding durability



Teaspoon
 B740STSF
 6¼" | 15.9 cm | 3 doz



Oval Bowl Soup/Dessert Spoon
 B740SDEF
 7¾" | 18.7 cm | 3 doz



Round Bowl Soup Spoon
 B740SRBF
 6½" | 16.5 cm | 3 doz



Iced Tea Spoon
 B740SITF
 7½" | 19.1 cm | 3 doz



Dinner Fork
 B740FDNF
 7½" | 19.1 cm | 3 doz



Salad/Pastry Fork
 B740FSLF
 6½" | 16.5 cm | 3 doz



Dinner Knife, 1-Pc.
 B740KPVF
 8¾" | 21.3 cm | 3 doz





Marquette™

18/8 Stainless Steel (2272)

A uniquely classic design that features a beaded rim framed by a distinctive fluted tip in quality stainless for long-lasting durability.

- 18/8 stainless steel
- Superb finish and pattern detail
- Long lasting durability
- Recommended for use in the healthcare industry



Teaspoon
2272STSF
6" | 15.2 cm | 3 doz



Oval Bowl Soup/Dessert Spoon
2272SPLF
6½" | 16.5 cm | 3 doz



Bouillon Spoon
2272SBLF
5⅞" | 14.9 cm | 3 doz



Iced Tea Spoon
2272SITF
7½" | 19.1 cm | 3 doz



Tablespoon/Serving Spoon
2272STBF
8⅜" | 21.3 cm | 1 doz



Dinner Fork
2272FDIF
7¾" | 19.7 cm | 3 doz



Salad/Pastry Fork
2272FSLF
6½" | 16.5 cm | 3 doz



Oyster/Cocktail Fork
2272FOYF
6" | 15.2 cm | 3 doz



Dinner Knife, 1-Pc.
2272KPVF
9" | 22.9 cm | 3 doz



Butter Knife, 1-Pc.
2272KBVF
7" | 17.8 cm | 1 doz





Michelangelo™

18/10 Stainless Steel (2765)

Enduring artistry, Michelangelo is the culmination of intricate, ornamental design and unparalleled craftsmanship. Elegant details like piercing and an elevated, symmetrical flower and scroll motif cover the tip end and wind their way to the neck, making this pattern exquisite.

- 18/10 stainless steel
- Superb finish and pattern detail
- Long lasting durability



Teaspoon
2765STSF
6" | 15.2 cm | 1 doz



Dinner Spoon
2765SPLF
6½" | 16.5 cm | 1 doz



A.D. Coffee Spoon
2765SADF
4¼" | 10.8 cm | 1 doz



Dinner Fork
2765FPLF
7¼" | 18.4 cm | 1 doz



Salad Fork
2765FSLF
6½" | 16.5 cm | 1 doz



Dinner Knife
2765KPSF
9" | 22.9 cm | 1 doz



Steak Knife
2765KSHF
9" | 22.9 cm | 1 doz



Butter Knife
2765KBTF
6¾" | 17.1 cm | 1 doz

18/10 Stainless Steel



Moda

18/10 Stainless Steel (T711)

One of the most popular flatware patterns in retail comes to foodservice! From its square-tipped, concave handle to the top of the highly polished headpiece, this pattern is pristine. The tip end curves gently upward, adding to the comfort in hand. Mixing a curvy silhouette with geometric details, Moda is a well-balanced accent to a modern table setting.



- Made of Quality 18/10 Stainless Steel
- A bright, high-luster finish
- Full-bodied handle with a comfortable composition



Teaspoon
T711STSF
6 ¼" | 16 cm | 1 doz



Soup/Dessert Spoon
T711SDEF
7" | 18 cm | 1 doz



Iced Tea Spoon
T711SITF
7 ¾" | 18.8 cm | 1 doz



Dinner Fork
T711FDNF
8" | 20.3 cm | 1 doz



Dessert/Salad Fork
T711FDEF
7" | 18 cm | 1 doz



Table Knife S/H
T133KDTF
9 ½" | 24 cm | 1 doz



Steak Knife S/H
T711KSSF
9 ½" | 24 cm | 1 doz





Moda Lux

18/10 Stainless Steel (T711)

From its square-tipped, concave handle to the top of the gold brushed finish headpiece, this pattern is pristine. The handle end curves gently upward, adding to the comfort in hand. Mixing a curvy silhouette with geometric details, Moda Lux is a well-balanced accent to a modern, elegant table setting.



- Made of quality 18/10 stainless steel
- A PVD gold finish
- Full-bodied handle with a comfortable composition



Teaspoon
T133STSF
6 ¼" | 16 cm | 1 doz



Soup/Dessert Spoon
T133SDEF
7" | 18 cm | 1 doz



Iced Tea Spoon
T133SITF
7 ¾" | 18.8 cm | 1 doz



Dinner Fork
T133FDNF
8" | 20.3 cm | 1 doz



Dessert/Salad Fork
T133FDEF
7" | 18 cm | 1 doz



Table Knife S/H
T133KDTF
9 ½" | 24 cm | 1 doz



Steak Knife S/H
T133KSSF
9 ½" | 24 cm | 1 doz

18/10 Stainless Steel





Needlepoint™

18/8 Stainless Steel (2544)

Like a strand of fine pearls, this classic stainless pattern is always in style, always appropriate. A delicate beaded border defines its graceful shape, bringing an air of casual elegance to your dining establishment. This durable design is a perfect choice for a wide variety of tabletops.

- 18/8 stainless steel
- Superb finish and pattern detail
- Long lasting durability



Teaspoon
2544STSF
6" | 15.2 cm | 3 doz



Oval Bowl Soup/Dessert Spoon
2544SPLF
6¾" | 17.1 cm | 3 doz



Bouillon Spoon
2544SBLF
5¾" | 14.6 cm | 3 doz



Iced Tea Spoon
2544SITF
7½" | 19.1 cm | 3 doz



Tablespoon/Serving Spoon
2544STBF
8¾" | 21.0 cm | 1 doz



Dinner Fork
2544FRSF
7¼" | 18.4 cm | 3 doz



Salad/Pastry Fork
2544FSLF
6½" | 15.6 cm | 3 doz



Oyster/Cocktail Fork
2544FOYF
6" | 15.2 cm | 3 doz



Dinner Knife, 1-Pc.
2544KPVF
9" | 22.9 cm | 3 doz



Butter Knife, F.H.
2544KBFF
6¾" | 16.2 cm | 1 doz





Patrician™

18/10 Stainless Steel (T322)

This 18/10 classic pattern is a vintage Oneida pattern from 1914. The pattern features timeless beveled edges, and a mirror finish.

- 18/10 stainless steel
- High polish and bright mirror finish
- Outstanding durability



Teaspoon
T322STSF
6¼" | 15.9 cm | 1 doz



Teaspoon, European Size
T322SFTF
5¾" | 14.6 cm | 1 doz



Oval Bowl Soup/Dessert Spoon
T322SDEF
7" | 17.8 cm | 1 doz



Bouillon Spoon
T322SBLF
6½" | 15.6 cm | 1 doz



Iced Tea Spoon
T322SITF
7¾" | 18.7 cm | 1 doz



A.D. Coffee Spoon
T322SADF
4¾" | 11.1 cm | 1 doz



Tablespoon Serving Spoon
T322SDIF
8" | 20.6 cm | 1 doz



Dinner Fork
T322FDNF
8" | 20.3 cm | 1 doz



Table Fork, European Size
T322FDIF
8¼" | 21.0 cm | 1 doz



Salad/Pastry Fork
T322FDEF
7½" | 18.1 cm | 1 doz



Oyster/Cocktail Fork
T322FOYF
5½" | 14.3 cm | 1 doz



Table Knife
T322KDTF
9½" | 24.1 cm | 1 doz



Steak Knife
T322KSSF
9½" | 24.1 cm | 1 doz



Dessert Knife
T322KDAF
8¼" | 21.0 cm | 1 doz



Butter Knife
T322KBVF
7" | 17.8 cm | 1 doz

18/10 Stainless Steel





Rio™

18/10 Stainless Steel (2621)

Clean lines and simple styling distinguishes Rio from other quality stainless designs. Carefully weighted and balanced for comfort, this flatware pattern exudes beauty in its smooth finish.

- 18/10 stainless steel
- Superb finish and pattern detail
- Long lasting durability



Teaspoon
2621STSF
6" | 15.2 cm | 3 doz



Oval Bowl Soup/Dessert Spoon
2621SPLF
6¾" | 17.1 cm | 3 doz



Sugar Spoon
2621SSGF
6" | 15.2 cm | 3 doz



Iced Tea Spoon
2621SITF
7⅝" | 19.4 cm | 3 doz



Tablespoon/Serving Spoon
2621STBF
8¼" | 21.0 cm | 1 doz



Dinner Fork
2621FRSF
7¼" | 18.4 cm | 3 doz



Salad/Pastry Fork
2621FSLF
6⅞" | 15.6 cm | 3 doz



Dinner Knife, 1-Pc.
2621KPVF
8¼" | 21.0 cm | 3 doz





Satin Astragal™

18/10 Stainless Steel (T045)

This majestic flatware features bright architectural bands that contrast nicely against the heavy-gauge matte handle. Satin Astragal offers the perfect mix of continental sizing and design, with European styling.

- 18/10 stainless steel
- Continental sizing
- High polish and bead blast finish*
- American and European décors
- Recommended for use in the healthcare industry



Teaspoon, US Size
T045STSF
6" | 15.2 cm | 1 doz



Oval Bowl Soup/Dessert Spoon
T045SDEF
6¾" | 17.1 cm | 1 doz



Round Bowl Soup Spoon
T045SRBF
6¾" | 17.1 cm | 1 doz



Iced Tea Spoon
T045SITF
7½" | 19.1 cm | 1 doz



A.D. Coffee Spoon
T045SADF
4¾" | 10.8 cm | 1 doz



Dinner Fork
T045FDNF
7½" | 19.1 cm | 1 doz



Table Fork, European Size
T045FDIF
8" | 20.3 cm | 1 doz



Salad/Dessert Fork
T045FDEF
6¾" | 17.1 cm | 1 doz



Oyster/Cocktail Fork
T045FOYF
6¼" | 15.9 cm | 1 doz



Table Knife, 1-Pc.
T045KPTF
9¾" | 23.8 cm | 1 doz



Butter Spreader, 1-Pc.
T045KSBF
6¾" | 16.8 cm | 1 doz

*Caution: Bead blast finished product may wear from use. This wear is a result of the finish process. It is by no means defective. Not recommended for use with dishwashers.





Satinique™

18/10 Stainless Steel (2599)

This stainless flatware design inspires timeless beauty with its bright, delicately sculpted border. A brushed, satin finish on the center panel contrasts nicely against the polished edges of the carved handle and the reflective tines and bowls.

- 18/10 stainless steel
- Superb brush finish and pattern detail
- Long lasting durability



Teaspoon
2599STSF
6" | 15.2 cm | 3 doz



Oval Bowl Soup Spoon
2599SPLF
6¾" | 17.1 cm | 3 doz



Bouillon Spoon
2599SBLF
5¾" | 14.6 cm | 3 doz



Tablespoon/Serving Spoon
2599STBF
8½" | 21.6 cm | 1 doz



Dinner Fork
2599FRSF
7¼" | 18.4 cm | 3 doz



Salad/Pastry Fork
2599FSLF
7" | 17.8 cm | 3 doz



Oyster/Cocktail Fork
2599FOYF
6" | 15.2 cm | 3 doz



Dinner Knife, 1-Pc.
2599KPVF
9" | 22.9 cm | 3 doz

18/10 Stainless Steel





Scroll™

18/8 Stainless Steel (2201)

Sweeping asymmetrical lines give Scroll stainless a fashionable, fresh look. This flatware exudes the kind of quality and craftsmanship your customers expect.

- 18/8 stainless steel
- Superb finish and pattern detail
- Long lasting durability
- Recommended for use in the healthcare industry



Teaspoon
2201STSF
6" | 15.2 cm | 3 doz



Oval Bowl Soup/Dessert Spoon
2201SDEF
7¼" | 18.4 cm | 3 doz



Bouillon Spoon
2201SBLF
6" | 15.2 cm | 3 doz



Iced Tea Spoon
2201SITF
7¾" | 18.7 cm | 3 doz



Tablespoon/Serving Spoon
2201STBF
8¼" | 21.0 cm | 1 doz



Dinner Fork
2201FDNF
7½" | 19.1 cm | 3 doz



Salad/Pastry Fork
2201FSLF
6¾" | 17.1 cm | 3 doz



Oyster/Cocktail Fork
2201FOYF
5¾" | 14.6 cm | 3 doz



Dinner Knife, 1-Pc.
2201KPVF
9" | 22.9 cm | 3 doz



Dinner Knife, 1-Pc. Hvy.
2201KDTF
9½" | 24.1 cm | 1 doz



Butter Knife, F.H.
2201KBFF
6½" | 16.5 cm | 1 doz





Sestina™

18/10 Stainless Steel (T301)

A clean pattern with contemporary styling, Sestina's sleek tapered handle is accented by a beautiful brushed finish. This pattern is the ideal companion to modern, undecorated, or banded dinnerware.

- 18/10 stainless steel
- Superb satin finish and pattern detail
- Long lasting durability
- Sculptured stand-up knife handles



Teaspoon, European Size
T301SFTF
5¾" | 14.6 cm | 3 doz



Teaspoon, US Size
T301STSF
6¼" | 15.9 cm | 3 doz



Tablespoon/Serving Spoon
T301STBF
8½" | 21.6 cm | 1 doz



Oval Bowl Soup/Dessert Spoon
T301SDEF
7" | 17.8 cm | 3 doz



Bouillon Spoon
T301SBLF
6¾" | 17.1 cm | 3 doz



Iced Tea Spoon
T301SITF
7¼" | 18.4 cm | 3 doz



Dinner Fork
T301FDIF
7¾" | 19.7 cm | 3 doz



Table Fork, European Size
T301FEUF
8½" | 21.6 cm | 3 doz



Salad/Pastry Fork
T301FSLF
7" | 17.8 cm | 3 doz



Dinner Knife, 1-Pc.
T301KPSF
9½" | 24.1 cm | 1 doz



Dinner Knife, 1-Pc.
T301KDTF
9¾" | 24.0 cm | 1 doz



Butter Knife, 1-Pc. (Stand-Up)
T301KBTF
7" | 17.8 cm | 1 doz

18/10 Stainless Steel





Stiletto™

18/10 Stainless Steel (2972)

A great finish on a great shape, Stiletto is a stand-out pattern. The satiny bead-blasted* handle tapers to a dramatic point inside the highly polished bowls. A dynamic design that complements other contemporary tableware.



- 18/10 stainless steel
- Superb bead blast finish and pattern detail*
- Long lasting durability
- US Design Patent # 447670



Teaspoon
2972STSF
6¼" | 15.9 cm | 3 doz



Teaspoon, European Size
2972SFTF
5⅝" | 14.9 cm | 3 doz



Oval Bowl Soup/Dessert Spoon
2972SDEF
7¼" | 18.4 cm | 3 doz



Bouillon Spoon
2972SBLF
6" | 15.2 cm | 3 doz



Iced Tea Spoon
2972SITF
7½" | 19.1 cm | 3 doz



Tablespoon/Serving Spoon
2972STBF
9¼" | 23.5 cm | 1 doz



Dinner Fork
2972FEUF
8" | 20.3 cm | 3 doz



Table Fork, European Size
2972FDLF
8½" | 21.6 cm | 3 doz



Salad/Pastry Fork
2972FSLF
7" | 17.8 cm | 3 doz



Oyster/Cocktail Fork
2972FOYF
6" | 15.2 cm | 3 doz



Dinner Knife, H.H.
2972KDSF
9½" | 24.1 cm | 1 doz



Dinner Knife, 1-Pc.
2972KPVF
9½" | 24.1 cm | 3 doz



Steak Knife, 1-Pc.
2972KSSF
9½" | 24.1 cm | 1 doz



Butter Spreader, F.H.
2972KSBF
6¾" | 17.1 cm | 1 doz

H.H. = Hollow Handle F.H. = Flat Handle

*Caution: Bead blast finish product may wear from use. This wear is a result of the finish process. It is by no means defective. Not recommended for use with dishwashers.





Unity™

18/10 Stainless Steel (2347)

Classic architecture, symmetry and balance come together in a harmonious union to create this popular flatware design. Pair this brightly polished pattern with most any linear-inspired tableware.

- 18/10 stainless steel
- Superb finish and pattern detail
- Long lasting durability
- US Design Patent # 365731



Teaspoon

2347STSF
6 1/8" | 15.6 cm | 3 doz



Oval Bowl Soup/Dessert Spoon

2347SDEF
7 1/4" | 18.4 cm | 3 doz



Round Bowl Soup Spoon

2347SRBF
6 3/4" | 17.1 cm | 3 doz



Iced Tea Spoon

2347SITF
7 1/4" | 18.4 cm | 3 doz



A.D. Coffee Spoon

2347SADF
4 1/4" | 10.8 cm | 3 doz



Tablespoon/Serving Spoon

2347STBF
8 1/2" | 21.6 cm | 1 doz



Dinner Fork

2347FPLF
7 3/8" | 18.7 cm | 3 doz



Table Fork

2347FDIF
7 3/4" | 19.7 cm | 3 doz



Salad/Pastry Fork

2347FSLF
7" | 17.8 cm | 3 doz



Oyster/Cocktail Fork

2347FOYF
6 1/2" | 15.6 cm | 3 doz



Dinner Knife, 1-Pc.

2347KPVF
9 1/2" | 24.1 cm | 3 doz



Dinner Knife, 1-Pc. Heavyweight

2347KDTF
9 1/2" | 24.1 cm | 1 doz



Steak Knife, 1-Pc.

2347KSSF
9 1/2" | 24.1 cm | 1 doz



Butter Knife, 1-Pc.

2347KBVF
6 3/4" | 17.1 cm | 1 doz

18/10 Stainless Steel



Verge™

18/10 Stainless Steel (T947)

Uniquely creative and trendsetting, Verge's form is an emulation of the art of origami. Folded into facets of gleaming stainless, the impression of the design is totally unique. Modern sensibility meets decorative style; this design captures a sculpturally dramatic and emotional spirit.

- 18/10 stainless steel
- Fine dining



Teaspoon
T947STSF
6¼" | 15.9 cm | 1 doz



Oval Bowl Soup/Dessert Spoon
T947SDEF
7¼" | 18.4 cm | 1 doz



A.D. Coffee Spoon
T947SADF
5" | 12.7 cm | 1 doz



Tablespoon/Serving Spoon
T947STBF
8½" | 21.6 cm | 1 doz



Iced Teaspoon
T947SITF
7¾" | 18.7 cm | 1 doz



Bouillon Spoon
T947SBLF
6¼" | 15.9 cm | 1 doz



Dinner Fork
T947FDNF
8" | 20.3 cm | 1 doz



Dessert/Salad Fork
T947FDEF
7¼" | 18.4 cm | 1 doz



Oyster Fork
T947FOYF
5⅝" | 14.3 cm | 1 doz



Dinner Knife, 1-Pc.
T947KDTF
9¾" | 24.8 cm | 1 doz



Steak Knife, 1-Pc.
T947KSSF
9⅝" | 24.5 cm | 1 doz



Butter Knife, 1-Pc.
T947KBVF
7" | 17.8 cm | 1 doz



ONEIDA®

18/0 Stainless Steel

Pairing contemporary influence and classic design, the Oneida Casual Dining 18/0 collection excites and entices with premium durability, appeal and value. These alluring patterns boast a flawless finish, heavy weight design and are exceptionally corrosion resistant. With superior finished edges, seams and tips, this collection sets the stage for your patrons to enjoy a delectable dining experience.

- 18% chrome stainless for added corrosion resistance
- Heavy weight design
- Exceptional durability provides optimum return on investment for casual dining establishments



Branded Backstamp



Branded Knife Blade



Pattern Name
On Teaspoons



Acclivity™

18/0 Stainless Steel (B882)

Showcasing both form and function, Acclivity has a recessed element at the handle center that stands out with a bright mirror finish. The teardrop handle creates both visual and tactile appeal. A delicate convex element at the base of each bowl adds further distinguishing dimension for a truly unique dining aesthetic.

- 18/0 stainless steel
- Heavy gauge



Teaspoon, European Size
B882SFTF
5¾" | 14.6 cm | 1 doz



Teaspoon
B882STSF
6½" | 16.5 cm | 1 doz



Oval Bowl Soup/Dessert Spoon
B882SDEF
7" | 17.8 cm | 1 doz



Bouillon Spoon
B882SBLF
6" | 15.2 cm | 1 doz



Iced Teaspoon
B882SITF
7¾" | 18.7 cm | 1 doz



A.D. Coffee Spoon
B882SADF
4¾" | 11.1 cm | 1 doz



Tablespoon/Serving Spoon
B882STBF
8¾" | 22.5 cm | 1 doz



Dinner Fork
B882FDNF
8" | 20.3 cm | 1 doz



Table Fork, European Size
B882FDIF
8¾" | 21.9 cm | 1 doz



Dessert/Salad Fork
B882FDEF
7¾" | 18.1 cm | 1 doz



Oyster/Cocktail Fork
B882FOYF
6¼" | 15.9 cm | 1 doz



Dinner Knife, 1-pc.
B882KDTF
9½" | 24.1 cm | 1 doz



Dessert Knife, 1-pc.
B882KDAF
8¼" | 21.0 cm | 1 doz



Butter Knife, 1-pc.
B882KBVF
7" | 17.8 cm | 1 doz



Athena™

18/0 Stainless Steel (B986)

A smooth, clean handle tip is a foundation for the stately Greek-style columns that rise up to distinguish this handsome design. Standard for both durability and value, the Athena pattern can be found on numerous tabletops across the country.

- 18% chrome stainless steel
- Quality finish
- Outstanding durability



Teaspoon
B986STSF
6 1/4" | 15.6 cm | 3 doz



Oval Bowl Soup/Dessert Spoon
B986SDEF
7 1/4" | 18.4 cm | 3 doz



Bouillon Spoon
B986SBLF
6 3/4" | 17.1 cm | 3 doz



Iced Tea Spoon
B986SITF
8 3/4" | 22.2 cm | 3 doz



Tablespoon/Serving Spoon
B986STBF
8" | 20.3 cm | 3 doz



Dinner Fork
B986FDNF
7 1/4" | 18.4 cm | 3 doz



Table Fork, European Size
B986FEUF
7 1/8" | 20.0 cm | 3 doz



Dinner Knife, 1-Pc.
B986KPVF
9" | 22.9 cm | 3 doz



Steak Knife, 1-Pc.
B986KSSF
9" | 22.9 cm | 3 doz



Bague™

18/0 Stainless Steel (B735)

A teardrop-shaped handle is divided into two identical panels by a vertical ridge line, reflecting contemporary flair. This casual flatware pattern is extremely resistant to corrosion and chemical damage... yet refined and attractive.

- 18% chrome stainless steel
- Quality finish
- Outstanding durability



Teaspoon

B735STSF
6" | 15.2 cm | 3 doz



Oval Bowl Soup/Dessert Spoon

B735SDEF
7" | 17.8 cm | 3 doz



Round Bowl Soup Spoon

B735SRBF
6¾" | 17.1 cm | 3 doz



Iced Tea Spoon

B735SITF
8" | 20.3 cm | 3 doz



Table Fork, European Size

B735FEUF
8½" | 20.6 cm | 3 doz



Salad/Dessert Fork

B735FDEF
7" | 17.8 cm | 3 doz



Table Knife, 1-Pc.

B735KPVF
9¾" | 23.8 cm | 3 doz



Barcelona™

18/0 Stainless Steel (B169)

Smooth, rounded curves taper to slender shafts, giving Barcelona a warm, comfortable feel. The perfectly polished, tear-drop shaped handle feels as good in the hand as it looks on your tables.

- 18% chrome stainless steel
- Quality finish
- Outstanding durability



Teaspoon
B169STSF
6" | 15.2 cm | 3 doz



Oval Bowl Soup/Dessert Spoon
B169SDEF
7" | 17.8 cm | 3 doz



Round Bowl Soup Spoon
B169SRBF
7" | 17.8 cm | 3 doz



Tablespoon/Serving Spoon
B169SDIF
8¼" | 21.0 cm | 3 doz



Iced Tea Spoon
B169SITF
7½" | 19.1 cm | 3 doz



A.D. Coffee Spoon
B169SADF
4½" | 11.4 cm | 3 doz



Table Fork, European Size
B169FDIF
8¾" | 21.3 cm | 3 doz



Dinner Fork
B169FDNF
8" | 20.3 cm | 3 doz



Salad/Dessert Fork
B169FDEF
7¼" | 18.4 cm | 3 doz



Oyster/Cocktail Fork
B169FOYF
5½" | 14.0 cm | 3 doz



Table Knife, 1-Pc.
B169KPTF
9¼" | 23.5 cm | 3 doz



Dessert Knife, 1-Pc.
B169KDAF
8¾" | 20.6 cm | 3 doz



Butter Spreader, 1-Pc.
B169KBFF
6¾" | 16.8 cm | 3 doz

18/0 Stainless Steel



Camlynn

18/0 Stainless Steel (T222)

A shapely yet controlled design, Camlynn is a graceful pattern with a noticeable presence on the table. Able to be paired with many different styles of tableware, this is an adaptable flatware pattern. Its luster finish slips down the edge of each piece, gliding delicately across the bead-blasted handle near the square tip end.

- Made of Quality 18/0 Stainless Steel
- A two-tone finish adds visual contrast



Teaspoon
T222STSF
6 1/8" | 15.6 cm | 1 doz



Dessert/ Oval Bowl Spoon
T222SDEF
7" | 17.9 cm | 1 doz



Dinner Fork
T222FDNF
7 7/8" | 20.1 cm | 1 doz



Dessert/Salad Fork
T222FDEF
7" | 18 cm | 1 doz



Dinner Knife S/H
T222KDTF
9 1/2" | 24.2 cm | 6 each



Chef's Table™

18/0 Stainless Steel (B678)

Form Follows Function. This modern pattern is long and lean. The ultra-sleek silhouette of Chef's Table flows into the long, narrow bowls with our gleaming ultra-bright finish. Perfect for the chef at home, this collection complements culinary creations with clean affordable style.

- 18/0 stainless steel
- High quality
- Casual dining



Teaspoon, European Size
B678SFTF
5¾" | 14.6 cm | 1 doz



Teaspoon
B678STSF
6¼" | 15.9 cm | 1 doz



Oval Bowl Soup/Dessert Spoon
B678SDEF
7" | 17.8 cm | 1 doz



Bouillon Spoon
B678SBLF
6¼" | 15.9 cm | 1 doz



Iced Teaspoon
B678SITF
7¾" | 18.7 cm | 1 doz



A.D. Coffee Spoon
B678SADF
4¾" | 11.1 cm | 1 doz



Serving Spoon
B678STBF
9" | 22.9 cm | 1 doz



Large Serving Spoon
B678STBFXL
11" | 27.9 cm | 1 doz



PCD Serving Spoon
B678SPTF
9" | 22.9 cm | 1 doz



Dinner Fork
B678FDNF
7¾" | 20.0 cm | 1 doz



European Dinner Fork
B678FDIF
9¾" | 23.2 cm | 1 doz



Dessert/Salad Fork
B678FDEF
7¾" | 18.1 cm | 1 doz



Oyster/Cocktail Fork
B678FOYF
6" | 15.2 cm | 1 doz



Dinner Knife, 1-pc.
B678KDTF
9½" | 24.1 cm | 1 doz



Dessert Knife, 1-pc.
B678KDAF
8¼" | 21.0 cm | 1 doz



Butter Knife, 1-pc.
B678KBVF
6¾" | 17.5 cm | 1 doz



Cold Meat Fork
B678FCMF
9¾" | 23.2 cm | 1 doz



Pasta Server
B678FPAF
10¼" | 26.0 cm | 1 doz



Serving Tong
B678MTRF
9¾" | 24.4 cm | 1 doz



Gravy Ladle
B678MGLF
8¾" | 21.3 cm | 1 doz



Servall
B678MPDF
10¾" | 27.0 cm | 1 doz

18/0 Stainless Steel



Chef's Table™ Gold

18/0 Stainless Steel (B678)

Form Follows Function. This modern pattern is long and lean. The ultra-sleek silhouette of Chef's Table flows into the long, narrow bowls with our gleaming ultra-bright finish. Perfect for the chef at home, this collection complements culinary creations with clean affordable style.

- 18/0 stainless steel
- High quality
- Casual dining



Teaspoon
B408STSF
6¼" | 15.9 cm | 1 doz



Oval Bowl Soup/Dessert Spoon
B408SDEF
7" | 17.8 cm | 1 doz



Iced Teaspoon
B408SITF
7¾" | 18.7 cm | 1 doz



Serving Spoon
B408STBF
9" | 22.9 cm | 1 doz



PCD Serving Spoon
B408SPTF
9" | 22.9 cm | 1 doz



A.D. Coffee Spoon
B408SADF
4¾" | 11.1 cm | 1 doz



Dinner Fork
B408FDNF
7¾" | 20.0 cm | 1 doz



Dessert/Salad Fork
B408FSLF
7¾" | 18.1 cm | 1 doz



Cold Meat Fork
B408FCMF
9¾" | 23.2 cm | 1 doz



Butter Knife, 1-pc.
B408KBVF
6⅝" | 17.5 cm | 1 doz



Dinner Knife, 1-pc.
B408KDTF
9½" | 24.1 cm | 1 doz



Steak Knife, 1-pc.
B408KSSF
10" | 25.4 cm | 1 doz





Chef's Table Hammered™

18/0 Stainless Steel (B327)

Our popular 18/0 Chef's Table is modern, contemporary, and now sparkles with a hammered finish that is suitable for most table setting needs.

- 18/0 stainless steel with hammered finish
- High quality
- Fine and casual dining



Teaspoon, European Size
B327SFTF
5¾" | 14.6 cm | 1 doz



Teaspoon
B327STSF
6¼" | 15.9 cm | 1 doz



Oval Bowl Soup/Dessert Spoon
B327SDEF
7" | 17.8 cm | 1 doz



Bouillon Spoon
B327SBLF
6¼" | 15.9 cm | 1 doz



Iced Teaspoon
B327SITF
7⅝" | 18.7 cm | 1 doz



A.D. Coffee Spoon
B327SADF
4⅝" | 11.1 cm | 1 doz



Serving Spoon
B327STBF
9" | 22.9 cm | 1 doz



Dinner Fork
B327FDNF
7⅞" | 20.0 cm | 1 doz



European Dinner Fork
B327FDIF
9⅞" | 23.2 cm | 1 doz



Dessert/Salad Fork
B327FDEF
7⅞" | 18.1 cm | 1 doz



Oyster/Cocktail Fork
B327FOYF
6" | 15.2 cm | 1 doz



Dinner Knife, 1-pc.
B327KDTF
9½" | 24.1 cm | 1 doz



Steak Knife, 1-pc.
B327KSSF
10" | 25.4 cm | 1 doz



Dessert Knife, 1-pc.
B327KDAF
8¼" | 21.0 cm | 1 doz



Butter Knife, 1-pc.
B327KBVF
6⅞" | 17.5 cm | 1 doz



Pierced Spoon
B327SBSF
13" | 33 cm | 1 doz



Banquet Spoon
B327SBNF
13" | 33 cm | 1 doz



Banquet Fork
B327FBNF
13" | 33 cm | 1 doz



Soup Ladle
B327MSPF
13" | 33 cm | 1 doz



Banquet Tong
B327MTLF
13" | 33 cm | 1 doz



Chef's Table Satin™

18/0 Stainless Steel (B449)

Modern and ultra sleek styling best describe this outstanding offering from Oneida. The satin finish on this smooth silhouette is the perfect complement to culinary creations.

- 18/0 stainless steel with satin finish
- High quality
- Fine and casual dining



Teaspoon, European Size
B449SFTF
5¾" | 14.6 cm | 1 doz



Teaspoon
B449STSF
6¼" | 15.9 cm | 1 doz



Oval Bowl Soup/Dessert Spoon
B449SDEF
7" | 17.8 cm | 1 doz



Bouillon Spoon
B449SBLF
6¼" | 15.9 cm | 1 doz



Iced Teaspoon
B449SITF
7½" | 19.1 cm | 1 doz



A.D. Coffee Spoon
B449SADF
4¼" | 10.8 cm | 1 doz



Serving Spoon
B449STBF
9" | 22.9 cm | 1 doz



PCD Serving Spoon
B449SPTF
9" | 22.9 cm | 1 doz



Dinner Fork
B449FDNF
8" | 20.3 cm | 1 doz



European Dinner Fork
B449FDIF
9" | 22.9 cm | 1 doz



Dessert/Salad Fork
B449FDEF
7¼" | 18.4 cm | 1 doz



Oyster/Cocktail Fork
B449FOYF
6" | 15.2 cm | 1 doz



Dinner Knife, 1-pc.
B449KDTF
9½" | 24.1 cm | 1 doz



Dessert Knife, 1-pc.
B449KDAF
8¼" | 21.0 cm | 1 doz



Butter Knife, 1-pc.
B449KBVF
7" | 17.8 cm | 1 doz



Cold Meat Fork
B449FCMF
9" | 22.9 cm | 1 doz



Gravy Ladle
B449MGLF
8½" | 21.6 cm | 1 doz



Glissade™

18/0 Stainless Steel (B636)

This premium pattern feels sexy and seamless in your hand thanks to its graceful curves, flawless mirror finish, and swept surfaces. The name Glissade speaks to the fluid motion created by its shape. A dramatic arch in each piece makes a sculptural statement on your tabletop.

- 18/0 stainless steel
- Heavy gauge
- Quality finish



Teaspoon, US Size
B636STSF
6¼" | 15.9 cm | 1 doz



Teaspoon, European Size
B636SFTF
5¾" | 14.6 cm | 1 doz



Oval Bowl Soup/Dessert Spoon
B636SDEF
7" | 17.8 cm | 1 doz



Bouillon Spoon
B636SBLF
6" | 15.2 cm | 1 doz



Iced Tea Spoon
B636SITF
7¾" | 18.7 cm | 1 doz



A.D. Coffee Spoon
B636SADF
4½" | 11.4 cm | 1 doz



Tablespoon/Serving Spoon
B636STBF
8¾" | 21.0 cm | 1 doz



Dinner Fork
B636FDNF
7¾" | 19.7 cm | 1 doz



Table Fork, European Size
B636FDIF
8¾" | 21.0 cm | 1 doz



Salad/Dessert Fork
B636FDEF
7" | 17.8 cm | 1 doz



Oyster/Cocktail Fork
B636FOYF
6" | 15.2 cm | 1 doz



Dinner Knife, 1-Pc.
B636KDIF
9½" | 24.1 cm | 1 doz



Dessert Knife, 1-Pc.
B636KDAF
7¾" | 19.7 cm | 1 doz



Butter Knife, 1-Pc.
B636KBVF
7" | 17.8 cm | 1 doz



Hallmark™

18/0 Stainless Steel (2904)

The Hallmark pattern is a clean, stainless pattern with broad contemporary appeal. It has a sculpted fleur-de-lis and a gracefully stylized handle with a glossy finish. Highly durable with a bright, polished look, it resists stains and corrosion while retaining its luster.

- 18/0 stainless steel
- Highly durable



Teaspoon
2904STSF
6" | 15.2 cm | 3 doz



Oval Bowl Soup/Dessert
2904SPLF
6¾" | 17.1 cm | 3 doz



Bouillon Spoon
2904SBLF
5⅞" | 14.9 cm | 3 doz



Dinner Fork
2904FRSF
7⅞" | 18.7 cm | 3 doz



Salad/Pastry Fork
2904FSLF
6¾" | 17.1 cm | 3 doz



Seafood Fork
2904FOYF
6" | 15.2 cm | 3 doz



Dinner Knife, 1-Pc. Wavy
2904KPVF
9" | 22.9 cm | 3 doz



Butter Knife, FH
2904KBFF
6⅞" | 16.8 cm | 3 doz



Lumos™

18/0 Stainless Steel (B856)

Lumos has a gently rounded handle that creates a statement of casual elegance. It has a superb finish and pattern detail, is economical, and has lasting durability.

- 18/0 stainless steel
- Highly durable and heavy weight



Teaspoon
B856STSF
5³/₈" | 13.7 cm | 3 doz



Oval Bowl Soup/Dessert Spoon
B856SDEF
7³/₄" | 19.8 cm | 3 doz



Round Bowl Soup Spoon
B856SRBF
7¹/₂" | 19.1 cm | 3 doz



Iced Tea Spoon
B856SITF
7¹/₄" | 18.4 cm | 3 doz



Table Fork, European Size
B856FDIF
8³/₄" | 22.1 cm | 3 doz



Dinner Fork
B856FDNF
8¹/₂" | 21.6 cm | 3 doz



Salad Fork
B856FSLF
6³/₄" | 17.2 cm | 3 doz



Dinner Knife, 1-Pc.
B856KDTF
9³/₈" | 23.9 cm | 3 doz



Butter Knife, 1-Pc.
B856KBVF
7³/₈" | 18.8 cm | 3 doz



Mascagni II™

18/0 Stainless Steel (B023)

Just as contemporary, versatile and understated as its fine dining counterpart, Mascagni II offers even more to a value-driven operator. Presenting a modern twist, this pattern's well known sleekly crafted design boasts a heavier gauge and 18/0 stainless steel construction. Certainly creating a statement of casual elegance, Mascagni II is at home on virtually any tabletop.

- 18/0 stainless steel
- Blades forged and waterground; with superior finished edges, seams and tips
- Classic European styling



Teaspoon, US Size
B023STSF
5¾" | 14.6 cm | 1 doz



Teaspoon, European Size
B023SFTF
5¼" | 13.3 cm | 1 doz



Oval Bowl Soup/Dessert Spoon
B023SDEF
7" | 17.8 cm | 1 doz



Round Bowl Soup Spoon
B023SRBF
6½" | 16.5 cm | 1 doz



Iced Tea Spoon
B023SITF
7¼" | 18.4 cm | 1 doz



A.D. Coffee Spoon
B023SADF
4¼" | 10.8 cm | 1 doz



Tablespoon/Serving Spoon
B023STBF
8" | 20.3 cm | 1 doz



Table Fork, European Size
B023FDIF
8" | 20.3 cm | 1 doz



Salad/Dessert Fork
B023FDEF
7" | 17.8 cm | 1 doz



Oyster/Cocktail Fork
B023FOYF
5½" | 14.0 cm | 1 doz



Fish Fork
B023FFSF
7" | 17.8 cm | 1 doz



Table Knife, 1-Pc.
B023KPTF
9½" | 24.1 cm | 1 doz



Dessert Knife, 1-Pc.
B023KDEF
8¾" | 21.0 cm | 1 doz



Steak Knife, 1-Pc.
B023KSSF
9½" | 24.1 cm | 1 doz



Butter Knife, 1-Pc.
B023KBBF
7" | 17.8 cm | 1 doz



Butter Spreader, 1-Pc.
B023KSBF
6¾" | 16.2 cm | 1 doz



Fish Knife, 1-Pc.
B023KFSF
7¾" | 19.7 cm | 1 doz



Featured Dinnerware — Bright White

New Rim™ II

18/0 Stainless Steel (B914)

With a heavier gauge and 18/0 stainless steel construction, New Rim II exudes a familiar graceful elegance as its fine dining counterpart. This pattern features a gently curving border and is a beautiful complement for virtually any tabletop.

- 18/0 stainless steel
- Heavy gauge
- Continental sizing and popular design
- American and European décors



Teaspoon, European Size
B914SFTF
5¼" | 13.3 cm | 1 doz



Teaspoon, US Size
B914STSF
6¼" | 15.9 cm | 1 doz



Oval Bowl Soup/Dessert Spoon
B914SDEF
7¼" | 18.4 cm | 1 doz



Bouillon Spoon
B914SBLF
6" | 15.2 cm | 1 doz



Round Bowl Soup Spoon
B914SRBF
6¾" | 17.1 cm | 1 doz



Iced Tea Spoon
B914SITF
7" | 17.8 cm | 1 doz



A.D. Coffee Spoon
B914SADF
4½" | 11.4 cm | 1 doz



Tablespoon/Serving Spoon
B914STBF
8¼" | 21.0 cm | 1 doz



Table Fork, European Size
B914FDIF
8¼" | 21.0 cm | 1 doz



Dinner Fork
B914FDEF
7¼" | 18.4 cm | 1 doz



Salad/Dessert Fork
B914FSLF
6¾" | 16.2 cm | 1 doz



Oyster/Cocktail Fork
B914FOYF
5¾" | 14.6 cm | 1 doz



Escargot Fork
B914FESF
6¼" | 15.9 cm | 1 doz



Fish Fork
B914FFSF
7" | 17.8 cm | 1 doz



Table Knife, 1-Pc.
B914KDVFWO
9" | 22.9 cm | 1 doz



Dessert Knife, 1-Pc.
B914KDEF
8" | 20.3 cm | 1 doz



Steak Knife, 1-Pc.
B914KSSF
9¼" | 23.5 cm | 1 doz



Butter Knife, 1-Pc.
B914KSBG
7¼" | 18.4 cm | 1 doz



Table Knife, 1-Pc.
T015KDVF
9" | 22.9 cm | 1 doz



Butter Spreader, 1-Pc.
B914KSBF
6¾" | 17.1 cm | 1 doz



Fish Knife, 1-Pc.
B914KFSF
8" | 20.3 cm | 1 doz



Noval™

18/0 Stainless Steel (B857)

The tailored look of this flatware is easy to match with modern and lightly decorated dinnerware. The brightly polished handle exudes clean and simple style. Noval is highly durable, has a soft sheen, and is highly economical.

- 18/0 stainless steel
- Heavy weight with mirror finish



Teaspoon
B857STSF
6¼" | 15.9 cm | 3 doz



Oval Bowl Soup/Dessert Spoon
B857SDEF
7¾" | 18.8 cm | 3 doz



Round Bowl Soup Spoon
B857SRBF
7½" | 19.1 cm | 3 doz



Iced Tea Spoon
B857SITF
7¾" | 18.8 cm | 3 doz



Table Fork, European Size
B857FDIF
8¾" | 22.1 cm | 3 doz



Dinner Fork
B857FDNF
7¾" | 18.8 cm | 3 doz



Salad Fork
B857FSLF
7½" | 18.1 cm | 3 doz



Dinner Knife, 1-Pc.
B857KDTF
9¾" | 23.9 cm | 3 doz



Butter Knife, 1-Pc.
B857KBVF
7" | 17.8 cm | 3 doz



Park Place™

18/0 Stainless Steel (B723)

Classic architecture, symmetry and balance come together to create this polished look that complements any tableware setting.

- 18/0 stainless steel
- Quality quality



Teaspoon
B723STSF
6" | 15.2 cm | 1 doz



Dessert Spoon
B723SPLF
6 5/8" | 16.8 cm | 1 doz



Bouillon Spoon
B723SBLF
5 3/8" | 14.3 cm | 1 doz



Table/Serving Spoon
B723STBF
8" | 20.3 cm | 1 doz



Dinner Fork
B723FPLF
7 3/8" | 18.7 cm | 1 doz



Salad Fork
B723FSLF
6 1/2" | 16.5 cm | 1 doz



Oyster/Cocktail Fork
B723FOYF
6" | 15.2 cm | 1 doz



Dinner Knife
B723KPVF
8 1/2" | 21.6 cm | 1 doz



Steak Knife
B723KSSF
8 3/4" | 22.2 cm | 1 doz



Butter Knife
B723KBBF
6 3/8" | 17.5 cm | 1 doz



Featured Glassware — Barbary 5oz.

Rosewood™

18/0 Stainless Steel (B990)

Ornate blossoms and scrolls enhance the curved borders on this traditional flatware pattern. Refined and attractive, this brightly finished stainless design provides an excellent return on investment for family dining establishments.

- 18% chrome stainless steel
- Quality finish
- Outstanding durability
- Recommended for use in the healthcare industry



Teaspoon
B990STSF
6" | 15.2 cm | 3 doz



Oval Bowl Soup/Dessert Spoon
B990SDEF
7" | 17.8 cm | 3 doz



Bouillon Spoon
B990SBLF
6" | 15.2 cm | 3 doz



A.D. Coffee Spoon
B990SADF
4½" | 11.4 cm | 3 doz



Dinner Fork
B990FDNF
7¼" | 18.4 cm | 3 doz



Salad/Pastry Fork
B990FSLF
6¼" | 15.9 cm | 3 doz



Oyster/Cocktail Fork
B990FOYF
5½" | 14.0 cm | 3 doz



Dinner Knife, 1-Pc.
B990KPVF
8½" | 21.6 cm | 3 doz



Shaker™

18/0 Stainless Steel (B600)

Clean and detailed with a narrow point astragal, Shaker pleases visually with clean symmetry and balance. This pattern pays homage to its design namesake, the Shaker community of the 18th century.

- 18/0 stainless steel
- Heavy gauge
- Quality finish



Teaspoon
B600STSF
6¼" | 15.9 cm | 1 doz



Teaspoon, European Size
B600SFTF
5¾" | 14.6 cm | 1 doz



Oval Bowl Soup/Dessert Spoon
B600SDEF
7" | 17.8 cm | 1 doz



Bouillon Spoon
B600SBLF
6" | 15.2 cm | 1 doz



Iced Tea Spoon
B600SITF
7¾" | 18.7 cm | 1 doz



A.D. Coffee Spoon
B600SADF
4½" | 11.4 cm | 1 doz



Tablespoon/Serving Spoon
B600STBF
8¼" | 21.0 cm | 1 doz



Dinner Fork
B600FDNF
8" | 20.3 cm | 1 doz



Table Fork, European Size
B600FDIF
8¼" | 21.0 cm | 1 doz



Dessert/Salad Fork
B600FDEF
7¼" | 18.4 cm | 1 doz



Oyster/Cocktail Fork
B600FOYF
6" | 15.2 cm | 1 doz



Dinner Knife, 1-Pc.
B600KDTF
9½" | 24.1 cm | 1 doz



Dessert Knife, 1-Pc.
B600KDAF
7¼" | 19.7 cm | 1 doz



Butter Knife, 1-Pc.
B600KBVF
7" | 17.8 cm | 1 doz





Stanford™

18/0 Stainless Steel (B167)

A fluted border defines the handle and gives Stanford a classic look. Your patrons will admire this brightly polished casual design for its simple styling and quality finish.

- 18% chrome stainless steel
- Quality finish
- Outstanding durability
- Recommended for use in the healthcare industry



Teaspoon

B167STSF
6¼" | 15.9 cm | 3 doz



Oval Bowl Soup/Dessert Spoon

B167SDEF
7½" | 19.1 cm | 3 doz



Bouillon Spoon

B167SRBF
6½" | 16.5 cm | 3 doz



Iced Tea Spoon

B167SITF
7¾" | 19.4 cm | 3 doz



A.D. Coffee Spoon

B167SADF
4½" | 11.4 cm | 3 doz



Tablespoon/Serving Spoon

B167SDIF
8¾" | 20.6 cm | 3 doz



Dinner Fork

B167FDNF
8¾" | 21.0 cm | 3 doz



Dinner/Dessert Fork

B167FDEF
7¼" | 18.4 cm | 3 doz



Oyster/Cocktail Fork

B167FOYF
5¾" | 14.6 cm | 3 doz



Dinner Knife, 1-Pc.

B167KPTF
9¾" | 24.4 cm | 3 doz



Butter Spreader, F.H.

B167KSBF
6¼" | 15.9 cm | 3 doz



Tidal™

18/0 Stainless Steel (B443)

Clean lines and simple styling are enhanced by a small wave in the handle of the new Tidal pattern from Oneida. Subtle design elements heighten the level of sophistication of this pattern.

- 18/0 stainless steel
- High quality and heavy weight
- Fine and casual dining



Teaspoon, US Size
B443STSF
6³/₈" | 16.2 cm | 1 doz



Teaspoon, European Size
B443SFTF
5⁵/₈" | 14.3 cm | 1 doz



Oval Bowl Soup/Dessert Spoon
B443SDEF
7⁷/₈" | 18.1 cm | 1 doz



Round Bowl Soup Spoon
B443SRBF
7" | 17.8 cm | 1 doz



Iced Tea Spoon
B443SITF
7³/₈" | 18.7 cm | 1 doz



A.D. Coffee Spoon
B443SADF
4¹/₂" | 11.4 cm | 1 doz



Tablespoon/Serving Spoon
B443STBF
8¹/₂" | 21.6 cm | 1 doz



Dinner Fork
B443FDNF
7⁷/₈" | 20.0 cm | 1 doz



Table Fork, European Size
B443FDIF
8¹/₂" | 21.6 cm | 1 doz



Salad/Dessert Fork
B443FDEF
7¹/₄" | 18.4 cm | 1 doz



Oyster/Cocktail Fork
B443FOYF
5¹/₄" | 13.3 cm | 1 doz



Dinner Knife, 1-Pc.
B443KPTF
9¹/₂" | 24.1 cm | 1 doz



Dessert Knife, 1-Pc.
B443KDEF
5⁵/₈" | 14.3 cm | 1 doz



Steak Knife, 1-Pc.
B443KSSF
9¹/₂" | 24.1 cm | 1 doz



SH Butter Knife, 1-Pc.
B443KBVF
7" | 17.8 cm | 1 doz



Titian™

18/0 Stainless Steel (B022)

Titian delivers the same dignified, durable and detailed style as its fine dining counterpart, Donizetti. Its delicate design celebrates a scrolled border that culminates in a majestic crown. Crafted in 18/0 stainless steel and a heavier gauge, this pattern boasts a modern makeover to its classic European design.

- 18/0 stainless steel
- Blades forged and waterground; with superior finished edges, seams and tips
- Classic European styling



Teaspoon, US Size
B022STSF
5¾" | 14.6 cm | 1 doz



Teaspoon, European Size
†B022SFTF
5¼" | 13.3 cm | 1 doz



Oval Bowl Soup/Dessert Spoon
B022SDEF
7" | 17.8 cm | 1 doz



Round Bowl Soup Spoon
B022SRBF
6½" | 16.5 cm | 1 doz



Iced Tea Spoon
B022SITF
7¼" | 18.4 cm | 1 doz



A.D. Coffee Spoon
B022SADF
4¼" | 10.8 cm | 1 doz



Tablespoon/Serving Spoon
B022STBF
8" | 20.3 cm | 1 doz



Table Fork, European Size
B022FDIF
8" | 20.3 cm | 1 doz



Salad/Dessert Fork
B022FDEF
7" | 17.8 cm | 1 doz



Oyster/Cocktail Fork
B022FOYF
5½" | 14.0 cm | 1 doz



Table Knife, 1-Pc.
B022KPTF
9½" | 24.1 cm | 1 doz



Dessert Knife, 1-Pc.
†B022KDEF
8½" | 21.6 cm | 1 doz



Butter Knife, 1-Pc.
B022KBBF
7" | 17.8 cm | 1 doz



Butter Spreader, 1-Pc.
†B022KSBF
6½" | 16.5 cm | 1 doz



Steak Knife, 1-Pc.
†B022KSSF
9½" | 24.1 cm | 1 doz



Fish Knife, 1-Pc.
†B022KFSF
7½" | 19.1 cm | 1 doz



Fish Fork, 1-Pc.
†B022FFSF
7" | 17.8 cm | 1 doz

† Special Order



Voss II™

18/0 Stainless Steel (B517)

Classic tines feed into dramatic teardrop handles with a curved, slightly concave tip. This pattern is great for casual entertaining and everyday use, constructed of heavy weight stainless steel. Its wide teardrop shape and concave end provide a modern look with a comfortable feel. Voss II is highly durable, has a soft sheen, and is highly economical.

- 18/0 stainless steel
- Heavy weight and durable
- Mirror finish



Teaspoon

B517STSF
6¼" | 16 cm | 1 doz



Oval Bowl Soup/Dessert Spoon

B517SDEF
7" | 17.8 cm | 1 doz



Round Bowl Soup Spoon

B517SRBF
7" | 17.8 cm | 1 doz



Iced Tea Spoon

B517SITF
7¾" | 18.8 cm | 1 doz



Table Fork, European Size

B517FDIF
8½" | 21.6 cm | 1 doz



Dinner Fork

B517FDNF
8" | 20.3 cm | 1 doz



Dessert/Salad Fork

B517FSLF
7" | 17.8 cm | 1 doz



Dinner Knife, 1-Pc.

B517KDTF
9¾" | 23.9 cm | 1 doz



Butter Knife, 1-Pc.

B517KBVF
7" | 17.8 cm | 1 doz



Wyatt™

18/0 Stainless Steel (B582)

Featuring the Oneida's Relic™ finish, this forged pattern features an organic yet texturally relaxed surface on the handle that is the perfect complement to any Artisan or casual dining experience.

- 18/0 stainless steel
- Forged, heavy gauge
- Features Oneida Relic™ finish



Teaspoon, European Size
B582SFTF
5¾" | 14.6 cm | 1 doz



Teaspoon
B582STS F
6¾" | 16.0 cm | 1 doz



Oval Bowl Soup/Dessert Spoon
B582SDEF
7" | 17.9 cm | 1 doz



Bouillon Spoon
B582SBLF
6½" | 15.8 cm | 1 doz



Iced Teaspoon
B582SITF
7½" | 18.8 cm | 1 doz



A.D. Coffee Spoon
B582SADF
4¾" | 11.1 cm | 1 doz



Table Spoon/Serving Spoon
B582STBF
9" | 22.9 cm | 1 doz



Dinner Fork
B582FDNF
8" | 20.1 cm | 1 doz



Dinner Fork, European Size
B582FDIF
8¾" | 21.5 cm | 1 doz



Dessert/Salad Fork
B582FDEF
7½" | 18.2 cm | 1 doz



Oyster/Cocktail Fork
B582FOYF
6" | 15.3 cm | 1 doz



Dinner Knife, 1-pc.
B582KDTF
9½" | 24.2 cm | 1 doz



Steak Knife, 1-pc.
B582KSSF
10" | 25.2 cm | 1 doz



Dessert Knife, 1-pc.
B582KDAF
8¼" | 21.0 cm | 1 doz



Butter Knife, 1-pc.
B582KBVF
7" | 17.6 cm | 1 doz

18/0 Stainless Steel



DELCO®

18/0 Stainless Steel

The Delco flatware collection is the perfect solution for today's high-volume, fast-paced dining operations. Select from traditional to contemporary offerings crafted of corrosion-resistant 18/0 stainless.

- 18% chrome stainless for added corrosion resistance
- Attractive patterns at a fair, economical price
- Variety of styles



Branded Backstamp



Branded Knife Blade



Pattern Name
On Teaspoons



Adalee™

18/0 Stainless Steel (B784)

Adalee is simply styled and value priced. This flatware design is practical for casual and high volume establishments.

- 18/0 stainless steel
- Family dining



Teaspoon

B784STSF
6" | 15.2 cm | 3 doz



Dinner/Dessert Spoon

B784SDEF
7" | 17.8 cm | 3 doz



Dinner Fork

B784FDNF
7¾" | 19.7 cm | 3 doz



Salad Fork

B784FSLF
7" | 17.8 cm | 3 doz



Dinner Knife

B784KDTF
9" | 22.9 cm | 3 doz



Belmore™

18/0 Stainless Steel (B561)

Reminiscent of a single strand of pearls, Belmore offers timeless appeal with its slender shaft and prominent beaded border. This flatware is the perfect solution for today's high-volume, fast-paced dining operations.

- 18% chrome stainless steel
- Economical price
- Outstanding durability
- Recommended for use in the healthcare Industry



Teaspoon
B561STSF
5¾" | 14.6 cm | 3 doz



Oval Bowl Soup/Dessert Spoon
B561SPLF
7¼" | 18.4 cm | 3 doz



Bouillon Spoon
B561SBLF
6" | 15.2 cm | 3 doz



Iced Tea Spoon
B561SITF
7¼" | 18.4 cm | 3 doz



Dinner Fork
B561FDNF
7¼" | 18.4 cm | 3 doz



Salad/Pastry Fork
B561FSLF
6¼" | 15.9 cm | 3 doz



Oyster/Cocktail Fork
B561FOYF
5½" | 14.0 cm | 3 doz



Dinner Knife, 1-Pc.
B561KPNF
8½" | 21.6 cm | 3 doz



Brayleen™

18/0 Stainless Steel (B635)

Stylish, yet affordable, the Brayleen pattern offers timeless appeal with its stylish design. This flatware is the perfect solution for today's high volume, fast paced dining operations.

- 18/0 stainless steel
- Family dining



Teaspoon
B635STSF
6¼" | 15.9 cm | 3 doz



Dinner/Dessert Spoon
B635SDEF
7½" | 18.1 cm | 1 doz



Dinner Fork
B635FDNF
7⅞" | 20.0 cm | 3 doz



Salad Fork
B635FSLF
7" | 17.8 cm | 3 doz



Dinner Knife
B635KDTF
9" | 22.9 cm | 3 doz



Chloe™

18/0 Stainless Steel (B447)

Embellished Opulence. This pattern boasts a teardrop shaped handle, garnished with a delicate beaded motif along the edge. Chloe's exquisite detailing surrounds a raised mirrored center panel that gleams.

- 18% chrome stainless steel
- Mirror finish
- Economically priced



Teaspoon
B447STSF
6¼" | 15.9 cm | 3 doz



Dinner/Dessert Spoon
B447SDEF
7¼" | 18.4 cm | 3 doz



Dinner Fork
B447FDNF
8" | 20.3 cm | 3 doz



Salad Fork
B447FSLF
7" | 17.8 cm | 3 doz



Dinner Knife
B447KDTF
9" | 22.9 cm | 3 doz

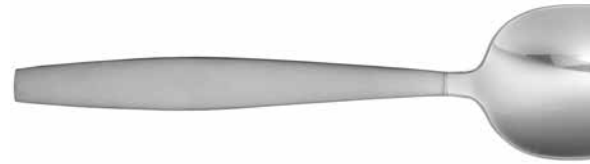


Colton™

18/0 Stainless Steel (B485)

This modern, slender pattern is current yet able to be paired with a more traditional setting. The satin finished handle has rounded square tip ends and an easy elegance. Colton is pure and precise.

- 18% chrome stainless steel
- Two toned mirror/bead blast finish
- Economically priced



Teaspoon

B485STSF
6¼" | 15.9 cm | 3 doz



Dinner/Dessert Spoon

B485SDEF
7" | 17.8 cm | 3 doz



Dinner Fork

B485FDNF
7⅞" | 20.0 cm | 3 doz



Salad Fork

B485FSLF
7⅞" | 18.1 cm | 3 doz



Dinner Knife

B485KDTF
9" | 22.9 cm | 3 doz



Dominion III™

18/0 Stainless Steel (B421)

A pair of incised lines narrow and taper at the shaft, dividing the petite handle into three segments. Crafted in 18% chrome stainless, Dominion is perfectly suited for your fast-paced, high-volume establishment. Must be ordered in master pack quantities.

- 18% chrome stainless steel
- Economical price
- Variety of styles
- Outstanding durability



Teaspoon

B421STSF
5 7/8" | 14.9 cm | 3 doz



Oval Bowl Soup/Dessert Spoon

B421SPLF
7" | 17.8 cm | 3 doz



Bouillon Spoon

B421SBLF
6" | 15.2 cm | 3 doz



Iced Tea Spoon

B421SITF
7 3/4" | 19.7 cm | 3 doz



Dinner Fork

B421FPLF
7 7/8" | 18.1 cm | 3 doz



Salad/Pastry Fork

B421FSLF
6" | 15.2 cm | 3 doz



Oyster/Cocktail Fork

B421FOYF
5 3/4" | 14.6 cm | 3 doz



Dinner Knife, 1-Pc.

B421KGWF
8 1/4" | 21.0 cm | 3 doz



Heavy Dominion™

18/0 Stainless Steel (B763)

This value-priced design boasts a pair of prominent lines flowing down the middle creating a pleasing paneled effect. The brightly polished handle tapers at the shank bringing balance to this casual pattern. Must be ordered in master pack quantities.

- 18% chrome stainless steel
- Economical price
- Variety of styles
- Outstanding durability



Teaspoon
B763STSF
6" | 15.2 cm | 3 doz



Bouillon Spoon
B763SBLF
6" | 15.2 cm | 3 doz



Dinner Fork
B763FDIF
7 7/8" | 18.1 cm | 3 doz



Dinner Knife, 1-Pc.
B763KPVF
8 3/4" | 21.0 cm | 3 doz



Greystoke™

18/0 Stainless Steel (B080)

In this classic colonial design adaptation, a broad central panel is tastefully flanked by slender pillars, culminating in an arched handle tip. This affordable flatware design sets the standard for both durability and value.

- 18% chrome stainless steel
- Quality finish
- Outstanding durability
- Recommended for use in the healthcare industry



Teaspoon
B080STSF
6" | 15.2 cm | 3 doz



Oval Bowl Soup/Dessert Spoon
B080SPLF
6¾" | 17.1 cm | 3 doz



Bouillon Spoon
B080SBLF
6" | 15.2 cm | 3 doz



Dinner Fork
B080FPLF
7¼" | 18.4 cm | 3 doz



Salad/Pastry Fork
B080FSLF
6¼" | 15.9 cm | 3 doz



Dinner Knife, 1-Pc.
B080KPVF
9" | 22.9 cm | 3 doz



Laguna™

18/0 Stainless Steel (B606)

The Laguna pattern offers the ever-popular shell motif at an attractive price point. This 18/0 flatware design is at home in a casual, fast-paced establishment with high volume.

- 18% chrome stainless steel
- Economical price
- Outstanding durability
- Recommended for use in the healthcare Industry



Teaspoon
B606STSF
6¼" | 15.9 cm | 3 doz



Oval Bowl Soup Spoon
B606SDEF
7" | 17.8 cm | 3 doz



Bouillon Spoon
B606SBLF
6" | 15.2 cm | 3 doz



Iced Tea Spoon
B606SITF
7½" | 19.1 cm | 3 doz



Tablespoon
B606STBF
8¼" | 21.0 cm | 3 doz



Dinner Fork
B606FDNF
7¼" | 18.4 cm | 3 doz



Salad/Pastry Fork
B606FSLF
7" | 17.8 cm | 3 doz



Oyster/Cocktail Fork
B606FOYF
6" | 15.2 cm | 3 doz



Dinner Knife, 1-Pc.
B606KPVF
8¾" | 22.2 cm | 3 doz



Butter Spreader, 1-Pc.
B606KSBF
7" | 17.8 cm | 3 doz



Lexington™

18/0 Stainless Steel (B070)

The Lexington pattern pleases with its straight-forward styling and economical price. Completely free of ornamentation, this flatware complements many table settings. Ideal for high-volume dining.

- 18% chrome stainless steel
- Economical price
- Outstanding durability



Teaspoon
B070STSF
6" | 15.2 cm | 3 doz



Oval Bowl Soup/Dessert Spoon
B070SPLF
7¼" | 18.4 cm | 3 doz



Bouillon Spoon
B070SBLF
6" | 15.2 cm | 3 doz



Iced Tea Spoon
B070SITF
7½" | 19.1 cm | 3 doz



Dinner Fork
B070FPLF
7½" | 19.1 cm | 3 doz



Salad/Pastry Fork
B070FSLF
6¼" | 15.9 cm | 3 doz



Oyster/Cocktail Fork
B070FOYF
5¾" | 14.6 cm | 3 doz



Dinner Knife, 1-Pc.
B070KPVF
8¼" | 21.0 cm | 3 doz



Melinda III™

18/0 Stainless Steel (B072)

Melinda is a petite design featuring graceful scrolls and petals on a traditional shape. This 18% chrome stainless design is appropriate for high-volume, fast-paced dining operations. Must be ordered in master pack quantities.

- 18% chrome stainless steel
- Economical price
- Variety of styles
- Outstanding durability



Teaspoon
B072STSF
6¼" | 15.9 cm | 3 doz



Oval Bowl Soup/Dessert Spoon
B072SPLF
7" | 17.8 cm | 3 doz



Bouillon Spoon
B072SBLF
6¼" | 15.9 cm | 3 doz



Iced Tea Spoon
B072SITF
8" | 20.3 cm | 3 doz



A.D. Coffee Spoon
B072SADF
4½" | 11.4 cm | 3 doz



Dinner Fork
B072FPLF
7¼" | 18.4 cm | 3 doz



Salad/Pastry Fork
B072FSLF
6¼" | 15.9 cm | 3 doz



Dinner Knife, 1-Pc.
B072KPVF
8¾" | 22.2 cm | 3 doz



Old English™

18/0 Stainless Steel (B817)

Colonial styling marked by the distinctive three-tined fork make Old English a popular pattern for the value-conscious establishment. This 18% chrome stainless design is the perfect solution for today's high-volume, fast-paced dining operations.

- 18% chrome stainless steel
- Economical price
- Outstanding durability



Teaspoon
B817STS
6¼" | 15.9 cm | 3 doz



Oval Bowl Soup/Dessert Spoon
B817SPLF
7" | 17.8 cm | 3 doz



Bouillon Spoon
B817SBLF
6" | 15.2 cm | 3 doz



Iced Tea Spoon
B817SITF
7½" | 19.1 cm | 3 doz



Tablespoon/Serving Spoon
B817STBF
8¾" | 21.3 cm | 3 doz



Dinner Fork - 3 Tine
B817FDNF
8" | 20.3 cm | 3 doz



Dinner Fork - 4 Tine
B817FDNG
7¾" | 19.7 cm | 3 doz



Salad/Pastry Fork - 3 Tine
B817FSLG
6¾" | 17.1 cm | 3 doz



Salad/Pastry Fork - 4 Tine
B817FSLF
6¾" | 17.1 cm | 3 doz



Oyster/Cocktail Fork
B817FOYF
6¼" | 15.9 cm | 3 doz



Dinner Knife, H.H. Pistol
B817KPWF
9¼" | 23.5 cm | 3 doz



Dinner Knife, 1-Pc.
B817KPVF
8¼" | 21.0 cm | 3 doz



Steak Knife, H.H.
B817KSHF
9½" | 23.2 cm | 3 doz



Butter Spreader, 1-Pc.
B817KSBF
6" | 15.2 cm | 3 doz



Pacific™

18/0 Stainless Steel (2669)

Smooth, prominent lines form a distinctive border in this 18% chrome stainless pattern. This flatware design is practical for casual and high volume establishments.

- 18% chrome stainless steel
- Economical price
- Outstanding durability



Teaspoon
2669STSF
6" | 15.2 cm | 3 doz



Bouillon Spoon
2669SCSF
6" | 15.2 cm | 3 doz



Iced Tea Spoon
2669SITF
7¾" | 19.7 cm | 3 doz



Dinner Fork
2669FDEF
7¼" | 18.4 cm | 3 doz



Dinner Knife, 1-Pc.
2669KPVF
8½" | 21.6 cm | 3 doz



Prima™

18/0 Stainless Steel (B595)

Prima features a delicate beaded border highlighting its gently rounded handles. This popular-priced, stainless pattern is ideal for high-volume dining.

- 18% chrome stainless steel
- Economical price
- Variety of styles
- Outstanding durability



Teaspoon

B595STSF
6¼" | 15.9 cm | 3 doz



Oval Bowl Soup/Dessert Spoon

B595SDEF
7½" | 19.1 cm | 3 doz



Bouillon Spoon

B595SBLF
6¼" | 15.9 cm | 3 doz



Iced Tea Spoon

B595SITF
7¼" | 18.4 cm | 3 doz



A.D. Coffee Spoon

B595SADF
4½" | 11.4 cm | 3 doz



Tablespoon

B595STBF
8½" | 21.6 cm | 3 doz



Dinner Fork

B595FDNF
7⅝" | 19.4 cm | 3 doz



Salad/Pastry Fork

B595FSLF
6⅝" | 16.8 cm | 3 doz



Oyster/Cocktail Fork

B595FOYF
5⅝" | 14.9 cm | 3 doz



Dinner Knife, 1-Pc.

B595KPVF
8¾" | 22.2 cm | 3 doz



Butter Spreader, F.H.

B595KSBF
6⅞" | 17.5 cm | 3 doz



Rhodes™

18/0 Stainless Steel (B176)

This flatware design boasts a graceful handle that crests in the middle and ends with a flourish at the tip. Like a perfectly formed leaf, this pattern provides a look of simple beauty. Durable and affordable, Rhodes can be found on dining tabletops across the country.

- 18% chrome stainless steel
- Quality finish
- Outstanding durability
- Recommended for use in the healthcare industry



Teaspoon

B176STSF
6" | 15.2 cm | 3 doz



Oval Bowl Soup/Dessert Spoon

B176SPLF
7" | 17.8 cm | 3 doz



Bouillon Spoon

B176SBLF
6¼" | 15.9 cm | 3 doz



Dinner Fork

B176FPLF
7½" | 19.1 cm | 3 doz



Salad/Pastry Fork

B176FSLF
6½" | 16.5 cm | 3 doz



Dinner Knife, 1-Pc.

B176KPVF
8¾" | 22.2 cm | 3 doz



Village Common™

18/0 Stainless Steel (B393)

This intriguing flatware design features a tapered, paddle-shaped handle with a slightly raised center. A carved crest at the tip end adds visual balance to the brightly polished tines and bowls.

- 18% chrome stainless steel
- Quality finish
- Outstanding durability



Teaspoon
B393STSF
6" | 15.2 cm | 3 doz



Oval Bowl Soup/Dessert Spoon
B393SPLF
7" | 17.8 cm | 3 doz



Bouillon Spoon
B393SBLF
6½" | 16.5 cm | 3 doz



Dinner Fork
B393FPLF
7½" | 19.1 cm | 3 doz



Salad/Pastry Fork
B393FSLF
6¾" | 17.1 cm | 3 doz



Dinner Knife, 1-Pc.
B393KPVF
8¼" | 21.0 cm | 3 doz



Windsor III™

18/0 Stainless Steel (B401)

Windsor is an exercise in simplicity with its clean lines and smooth handle design. Crafted in 18% chrome stainless, this high-volume pattern offers an excellent return on investment. Must be ordered in master pack quantities.

- 18% chrome stainless steel
- Economical price
- Variety of styles
- Outstanding durability



Teaspoon
B401STSF
6" | 15.2 cm | 3 doz



Oval Bowl Soup/Dessert Spoon
B401SPLF
7" | 17.8 cm | 3 doz



Bouillon Spoon
B401SBLF
6" | 15.2 cm | 3 doz



Iced Tea Spoon
B401SITF
7¾" | 19.7 cm | 3 doz



A.D. Coffee Spoon
B401SADF
4⅞" | 11.7 cm | 3 doz



Tablespoon/Serving Spoon
B401STBF
7¾" | 19.7 cm | 3 doz



Dinner Fork
B401FPLF
7" | 17.8 cm | 3 doz



Salad/Pastry Fork
B401FSLF
6" | 15.2 cm | 3 doz



Oyster/Cocktail Fork
B401FOYF
5¾" | 14.6 cm | 3 doz



Dinner Knife, 1-Pc.
B401KGWF
8¼" | 21.0 cm | 3 doz

18/0 Stainless Steel

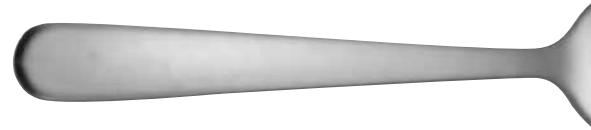


Heavy Windsor™

18/0 Stainless Steel (B767)

Heavy Windsor is an exercise in simplicity with its clean lines and smooth handle design. Crafted in 18% chrome stainless, this high-volume pattern offers an excellent return on investment for casual dining. Must be ordered in master pack quantities.

- 18% chrome stainless steel
- Economical price
- Variety of styles
- Outstanding durability



Teaspoon
B767STSF
6" | 15.2 cm | 3 doz



Bouillon Spoon
B767SBLF
6" | 15.2 cm | 3 doz



Iced Tea Spoon
B767SITF
7¼" | 19.7 cm | 3 doz



Dinner Fork
B767FDNF
7" | 17.8 cm | 3 doz



Dinner Knife, 1-Pc.
B767KPVF
8¼" | 21.0 cm | 3 doz

Steak Knives

Oneida's Steak Knives Collection features well-balanced handles, high-quality blades, and a variety of textures and finishes that are pleasing to the hand. Crafted from carefree, corrosion-resistant stainless steel, Oneida's steak knives are the perfect choice for your finest cuts.

- Superbly balanced
- Corrosion-resistant



Shelby Steak Knife
B907KSSU
9 1/8" | 23.2 cm | 1 doz



Caspian Serrated Steak Knife
B907KSSKR
9 1/4" | 23.5 cm | 1 doz



Crest (Pearl) Steak Knife, 1-Pc.
B907KSSA
9 1/4" | 23.5 cm | 1 doz



Bostonian Steak Knife
B907KSSV
10 1/4" | 26.0 cm | 1 doz



Caspian Steak Knife, 1-Pc.
B907KSSC
9 3/8" | 23.8 cm | 1 doz



Ionian Steak Knife, 1-Pc.
B907KSSF
10 1/4" | 26.0 cm | 1 doz



Ionian Wood Steak Knife
B907KSSFW
10 1/4" | 26.0 cm | 1 doz



Rustic Wood Steak Knife
B907KSSZ
9 1/4" | 23.5 cm | 1 doz



Lancaster Metal Steak Knife
B907KSSY
9" | 22.9 cm | 1 doz



Steak Knives

Available in a variety of sizes, these knives feature stainless steel blades. The handle is molded to provide a comfortable feel when carving into your favorite cut of meat. All orders for Econoline steak knives must be in master pack quantities. All other steak knives can be ordered in multiples of one dozen.



Laredo, Polypropylene Handle
B770KSSG
10" | 25.4 cm | 1 doz



Mustang, Polyformaldehyde Handle
B770KSSH
9 1/4" | 23.5 cm | 1 doz



Wrangler, Polypropylene Handle
B620KSSF
9 3/4" | 24.8 cm | 1 doz



Longhorn, Nylon Handle
B770KSSN
8 1/2" | 21.6 cm | 1 doz



Nevada, Red Brazilian Wood Handle
B770KSSMRT
10" | 25.4 cm | 1 doz



Old English, H.H. Stainless Steel Handle
B817KSHF
9 1/8" | 23.2 cm | 3 doz



Montana, Red Brazilian Wood Handle
B770KSSK
10" | 25.4 cm | 1 doz



Pioneer, Hardwood Handle
B770KSHH
10" | 25.4 cm | 1 doz



Titan, Polypropylene Handle
B617KSSF
8 1/2" | 21.6 cm | 1 doz



Seville, Polypropylene Handle
B618KSSF
8 3/4" | 22.2 cm | 1 doz

Econoline Steak Knives



305B, Econoline Steak Knife
Bubinga Wood Handle
B614KSSF
8" | 20.3 cm | 3 doz



316A, Econoline Steak Knife
Bubinga Wood Handle
B615KSSF
8 1/2" | 21.6 cm | 3 doz

Custom Decorating

Custom Options

Your logo or distinctive design can be reproduced on select flatware patterns and steak knives, to create a look that is uniquely yours. Your Oneida dealer can provide further information and obtain quotations on your custom project.



Quality Assurance

Quality

To maximize the beauty and long usage of your stainless or silverplate investment, check each of the quality points shown here.

Materials

Silverplate – During silverplating, extra silver is deposited on the back of each piece for longer wear.

Stainless – All of Oneida's stainless includes 18% chrome for superior resistance to food and cleaning chemicals, as well as protection against corrosion. The 18/10 combination includes 10% nickel, respectively, for a soft silver-like luster to complement the exceptional durability.

The enduring elegance of silverplate

Nothing can match the distinctive beauty of silver. Along with exceptional cuisine, fine wines and hospitable service, fine silverplate helps you establish an identity of excellence. Silver actually becomes more beautiful and durable with use; normal handling and burnishing hardens the surface and develops the mellow patina associated with antique silver. In addition, today's improved, portable burnishing equipment makes it simple to give your silverplate the best care at a reasonable cost, with a minimum of labor.

Finish

A quality finish makes flatware more comfortable to hold, more resistant to damage from food particles — and more pleasing to the eye. Overall smoothness and luster are combined with clear crisp pattern styling. Edges should be well buffed with no rough spots. A smooth uniform finish also allows for easier cleaning. Compare other flatware finishes to Oneida, and you'll see why we are the industry leader.

Grading

The spoon is thickest at the handle shank and tapers to a thin edge at the bowl's tip, thanks to a rolling process called grading. Oneida's grading combines balance with strength. Metal is distributed to areas that need strength, providing durability for rough handling without adding unnecessary bulk. For properly graded flatware that provides superior comfort and durability, look for a graceful taper, strength that resists bending, and a balanced feel.

Casting

All borders, handles, spouts, and ornamentation are cast by pouring hot casting alloys into a two piece mold, then quickly cooling in water. The metal hardens instantaneously. The two-piece casting leaves no seam or joints.

Soldering

On each piece of holloware, skilled craftsmen use the exact amount of solder to form a lifelong bond between the casting and the body.

Stainless as a long-term investment

Quality stainless helps you get more for your tableware investment by providing a longer life of beautiful and durable service. Today's customers are spending more of every dollar dining out. Quality stainless helps create a fine dining atmosphere that keeps this profitable audience coming back. Your stainless steel will give extra long service and will always look great when properly cared for. Materials such as eggs, vinegar and acids found in foods should be removed by soaking, washing and rinsing thoroughly immediately after stainless is used.

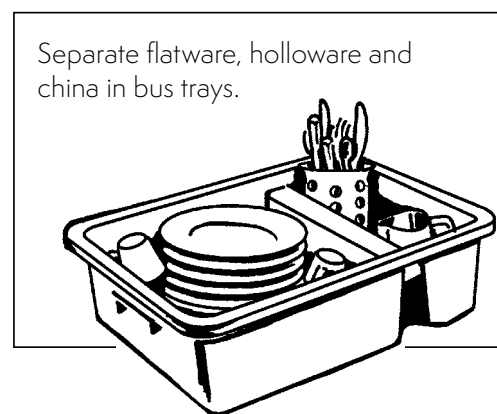
Quality Assurance

Flatware Care & Handling

Fine silverplate and stainless flatware will give you extra long service and will always look great when properly cared for. We offer the following recommendations.

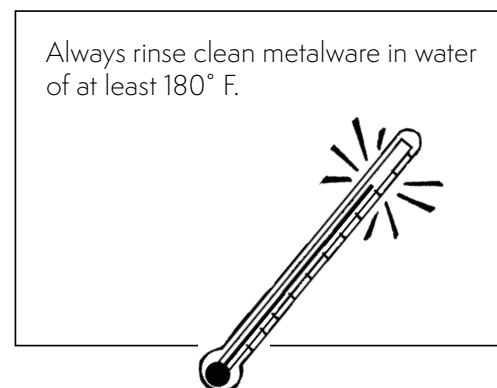
Handling:

- Minimum amount of handling is required when perforated cylinders in a portable rack are used to transport, wash, and dispense flatware.
- When using a system where the flatware is transferred from a cleaning cylinder to a storage cylinder by inversion **sort flatware tines, bowls and blades up.**



Rinsing:

- Consider adding a wetting agent to the rinse to prevent minerals in the water from staining your metalware.
- Pre-soak and wash metalware immediately after its removal from the table. Do not leave metalware in the pre-soak solution for more than 20 minutes before it is washed. Change the pre-soak solution after two or three cycles of use. Chemicals accumulate in pre-soak and may cause harm.
- Utilize a softener if you have very hard water. A high chloride content in the water can also be damaging.

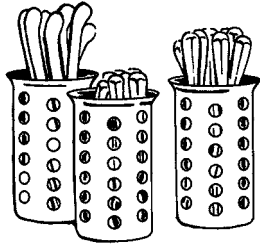


Quality Assurance

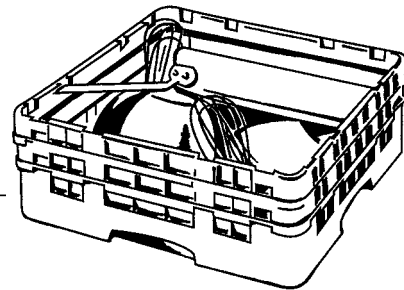
Washing:

- Remove all remnants of food from metalware items immediately after use. Avoid using steel wool or metal scrapers.
- Always separate flatware and holloware for pre-soaking and use a plastic or stainless steel pan, never aluminum.
- Do not use a pre-soak solution containing acidic silver detarnishing agents, including chlorides, bromides or iodides, as these products cause severe corrosion.
- Always wash your metalware in hot water and make sure you choose a cleaning agent free of abrasive or corrosive qualities that might damage your metalware.
- Avoid low-temp dishwashing. It is not suited for metalware.

When flatware is transported and washed in the same cylinder, **sort flatware tines, bowls and blades down**. This prevents contamination when items are removed for setting the tables.

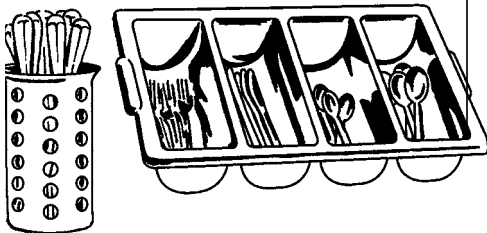


Load the washing machine with the openings of hollow pieces facing down.

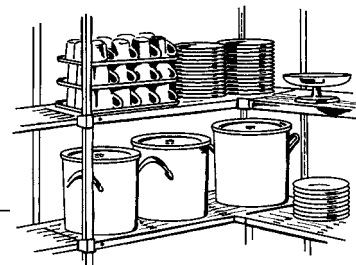


Storing:

Always make sure your metalware is clean and dry before storing to avoid corrosion and oxidation marks.



Keep your holloware pieces together in a dry area. Plastic or wooden racks provide the best storage.



Quality Assurance

Pertaining to Silverplate Metalware Only

Detarnishing:

Critical to the care of silverplate is proper detarnishing, particularly prior to burnishing. Pieces should be de-tarnished about every 15 days. Consult a reputable manufacturer of the silverplate or of the detarnishing product for the method best suited to your needs. Always follow the manufacturer's directions carefully. Always remove knives with stainless steel blades from the detarnishing solution within 30 seconds. Longer exposure tends to lead to discoloration and corrosion of the blades.

Burnishing:

Invest in a fine vibratory or tumble-type burnishing machine, manufactured in sizes to fit any operation. Always keep your burnisher clean and follow the manufacturer's instructions. Do not burnish hollow handle knives.

Storing:

Provide adequate space when storing, ideally away from air conditioning and sulfur containing vapors.

World Headquarters

200 Civic Center Drive
Suite 700
Columbus, OH 43215
USA

Customer Service

Phone: 1.800.828.7033
customersupport-foodservice@theoneidagroup.com

foodservice.oneida.com

ONEIDA[®]
Designing the dining experience.™

All pattern names and designs are intellectual properties of Oneida, Ltd., a subsidiary of The Oneida Group Inc. Oneida® is a registered trademark of Oneida, Ltd. in the U.S. and certain countries.
200 S. Civic Center Drive, Suite 700, Columbus, OH 43215.
©2019 Oneida, Ltd. All rights reserved.